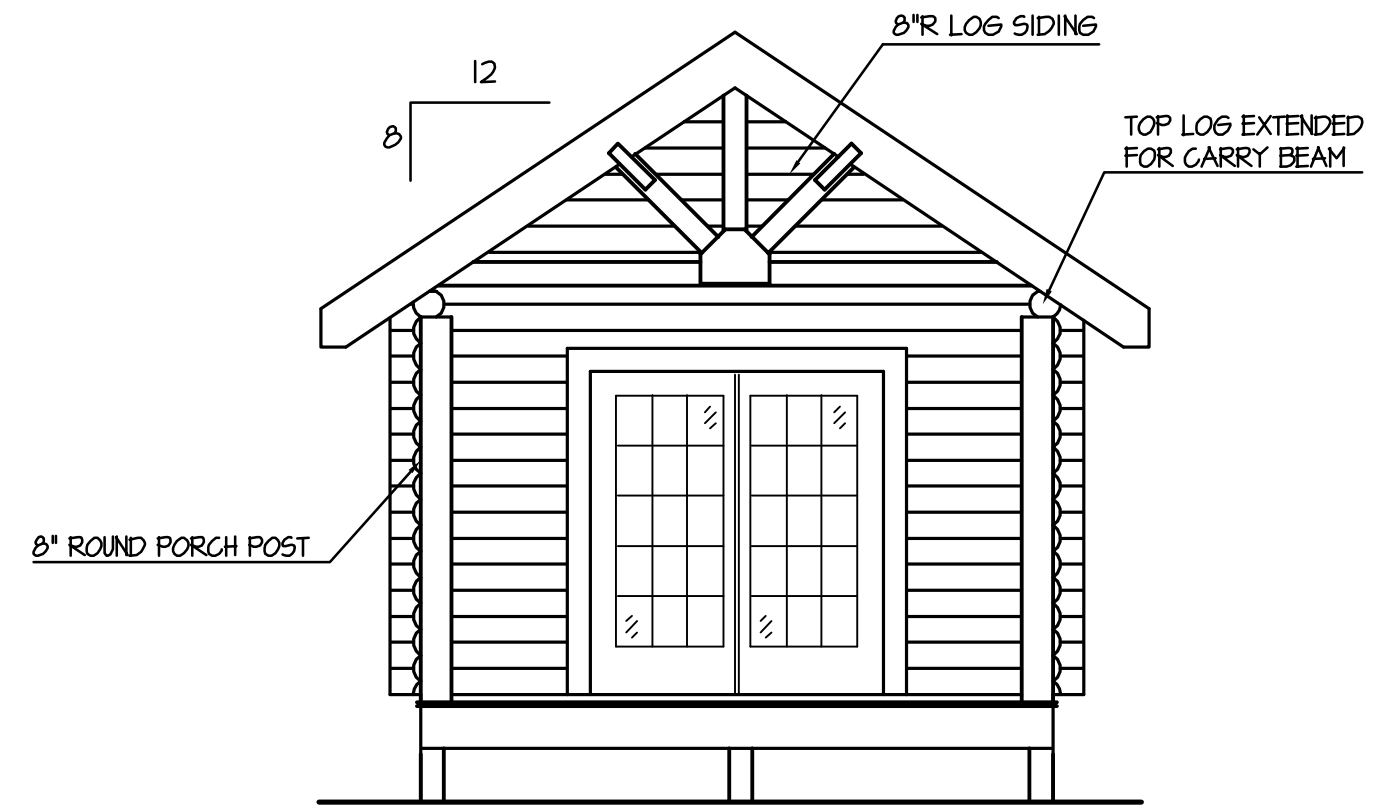


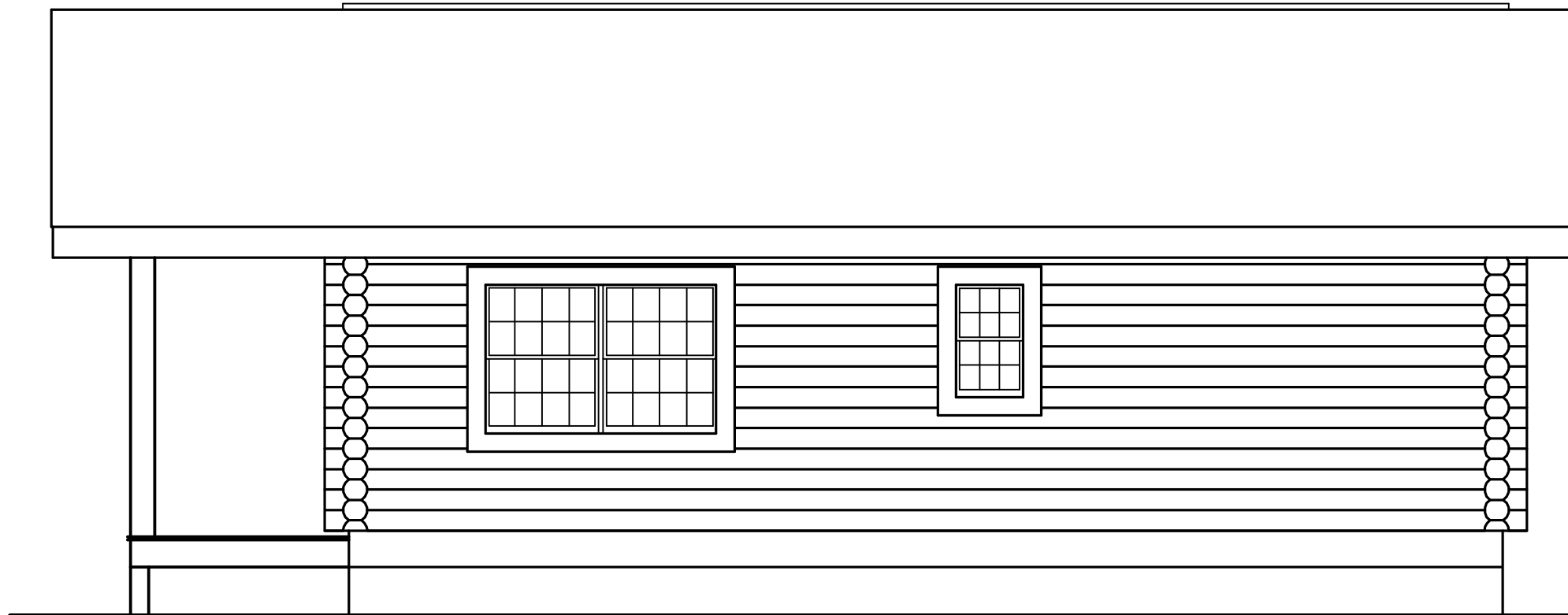
**LEFT ELEVATION**

1/4" = 1'-0"



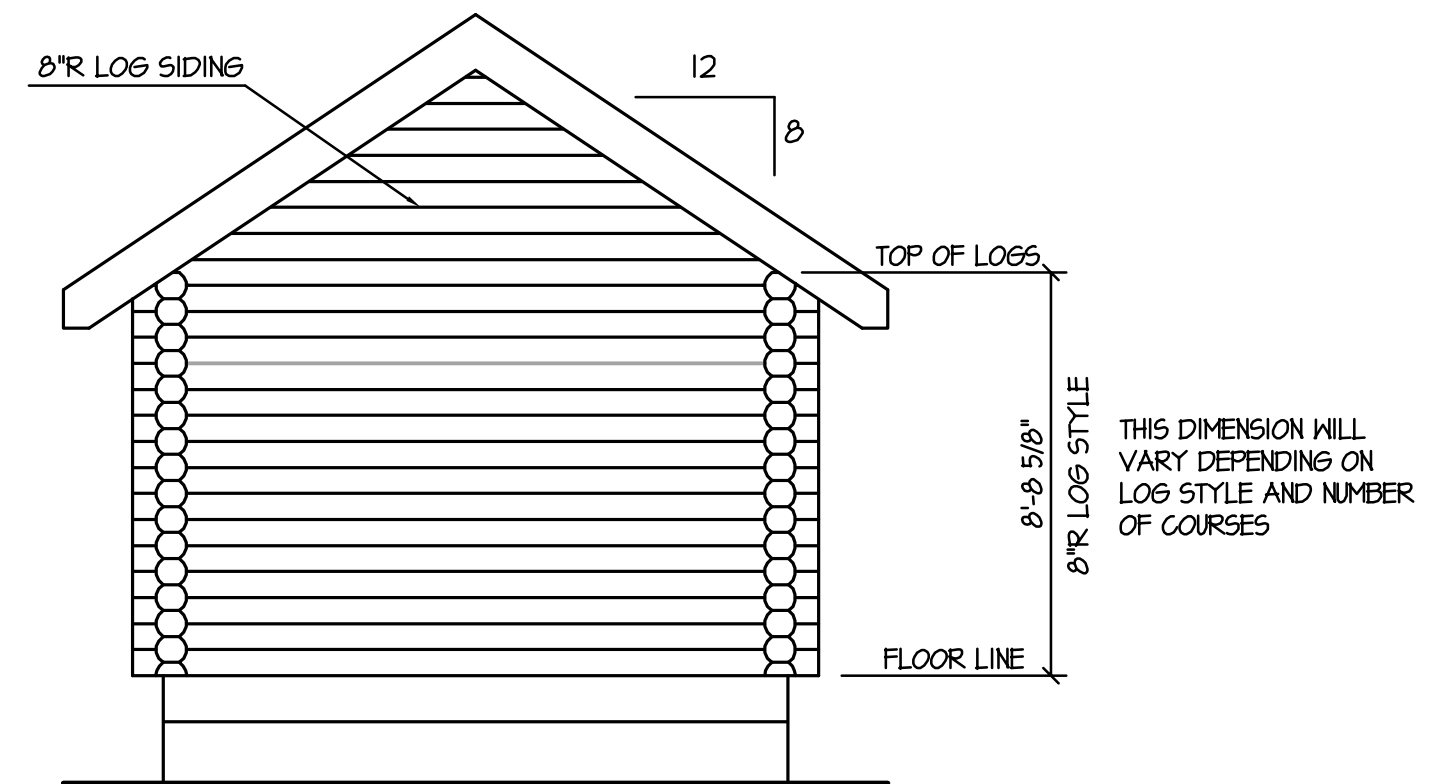
**FRONT ELEVATION**

1/4" = 1'-0"



**RIGHT ELEVATION**

1/4" = 1'-0"



**REAR ELEVATION**

1/4" = 1'-0"

**DESIGN CRITERIA:**  
THIS BUILDING HAS BEEN  
DESIGNED FOR WIND LOADS  
OF 90 MPH, 3 SECOND GUST OR  
LESS. FOR HIGHER WIND LOADS,  
MATERIALS AND DESIGN MUST  
BE REVIEWED.

**NOTE A:**  
SHINGLE INSTALLATION MUST BE  
PER SHINGLE MANUFACTURER FOR  
LOW AND/OR HIGH PITCH ROOFS.  
FIELD VERIFY ALL ROOF AND  
PORCH PITCHES WITH FIELD  
CONDITIONS AND/OR CUTSHEETS

**FINAL PLAN APPROVAL**  
SIGNATURE INDICATES COMPLETE UNDERSTANDING  
OF ADJACENT BARNA LOG HOME DISCLAIMER  
APPROVED AS DRAWN  
REVISIONS WITH CORRECTIONS - NO  
RESUBMITTING OF PLANS REQUIRED.  
REVISE PER CHANGES INDICATED ON PLANS  
AND RESUBMIT. CHARGES MAY APPLY.

NAME \_\_\_\_\_ DATE \_\_\_\_\_  
COPYRIGHT 2006  
ALL RIGHTS RESERVED BY BARNA LOG HOMES, LLC

**BARNA LOG HOME DISCLAIMER**  
COPYRIGHT ON THIS DESIGN AND PLAN OR ANY DESIGNS CREATED,  
MODIFIED OR DERIVATIVES THEREOF BELONG TO BARNA LOG HOMES.  
DUE TO VARIANCE IN LOCAL CODES, BARNA LOG HOMES MAKES NO  
WARRANTY AS TO PLANS CONFORMANCE WITH LOCAL BUILDING CODES.  
IT IS THE RESPONSIBILITY OF THE CUSTOMER TO OBTAIN ALL NECESSARY  
PERMITS AND APPROVALS FROM LOCAL, STATE AND FEDERAL AGENCIES.  
ENGINEER OR ARCHITECT IF REQUIRED. ANY DISCREPANCIES IN OR  
QUESTIONS IN REGARD TO INTERPRETATION OF THE PLANS SHALL BE  
THE RESPONSIBILITY OF THE CUSTOMER TO CONSULT WITH THE LOCAL  
DEPARTMENT BEFORE PROCEEDING WITH THAT PORTION OF WORK.  
THE PLANS ARE THE COPYRIGHTED PROPERTY OF BARNA LOG HOMES.

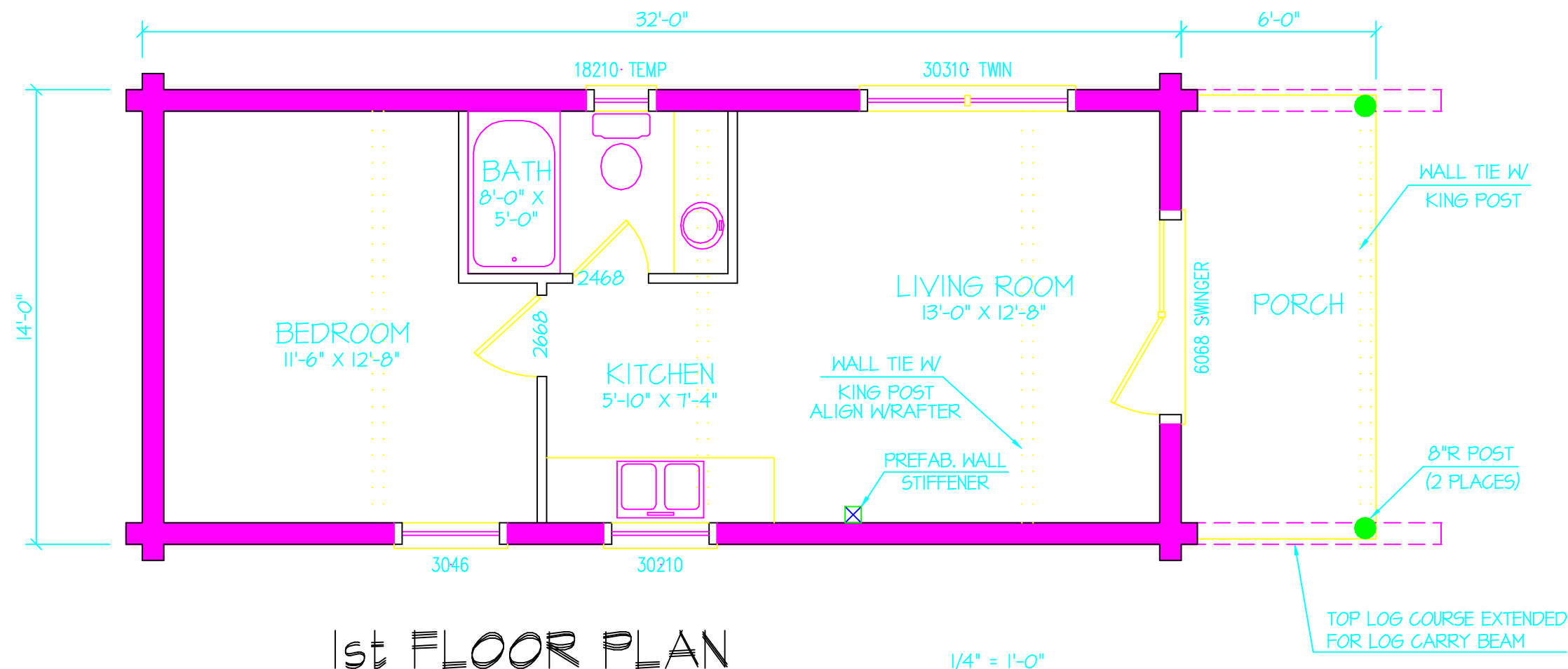
A Custom Home For:  
**BEARHAT MOUNTAIN**



REPORT # 2305  
CODE COMPLIANCE FOR  
2003 INTERNATIONAL CODE  
FOR ONE- AND TWO-FAMILY  
DWELLINGS

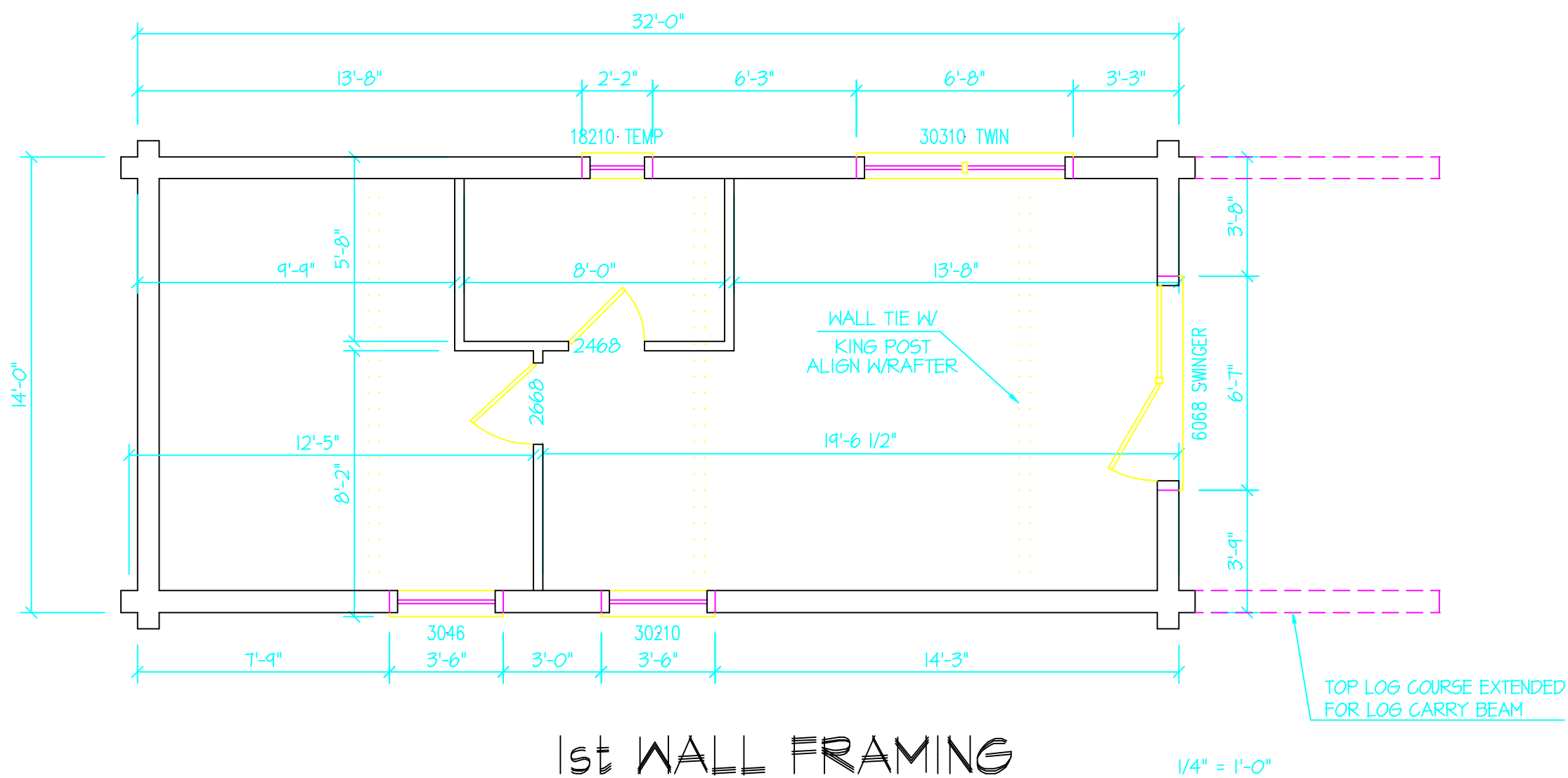
**ELEV ALL**

PA Number:  
Dealer: **BARNA**  
Coordinator: **BARNA**  
Date: **6/15/06**  
Drawn by: **BTH** Checked by:  
File Name: **BEAR**



WINDOW SCHEDULE			
DESCRIPTION	MANUFACTURER	ROUGH OPENING	BLH R.O. IN LOG WALL
30210 SINGLE	GREEN RIVER	3'-2" X 3'-2"	3'-6" X 3'-7"
30310 SINGLE	" "	3'-2" X 4'-2"	3'-6" X 4'-7"
3046 SINGLE	" "	3'-2" X 4'-10"	3'-6" X 5'-3"
18210 SINGLE	" "	1'-10" X 3'-2"	2'-2" X 3'-7"
30310 TWIN	" "	6'-4" X 4'-2"	6'-8" X 4'-7"

DOOR SCHEDULE			
DESCRIPTION	MANUFACTURER	ROUGH OPENING	BLH R.O. IN LOG WALL
6068 SWINGER	" "	6'-4" X 6'-11"	6'-7" X 7'-2 1/2"



**NOTE:**

ALL BLH HOMES ARE DESIGNED FOR SETTLING. THE OWNER/CONTRACTOR MUST INSURE THAT THE HOME IS BUILT IN ACCORDANCE WITH THE CONSTRUCTION METHODS ILLUSTRATED IN THE BLH STANDARD DETAILS PROVIDED.

ALL SETTLING JACKS ARE BEARING POINTS AND MUST BE LOCATED OVER POST OR GANG STUDS. THESE LOCATIONS MUST CORRESPOND WITH BEARING POINTS IN THE FOUNDATION SYSTEM.

ALL INTERIOR PARTITION WALLS SHOWN ARE 3 1/2" UNLESS OTHERWISE NOTED.

ALL GLU-LAMS ARE 24F-V4 ARCHITECTURAL DOUGLAS FIR OR EQUAL UNLESS OTHERWISE NOTED.

Any alteration or modification to a BLH standard floor plan must be approved by qualified professionals for structural integrity and building practicability or feasibility prior to construction of any such modification.

**FINAL PLAN APPROVAL**  
SIGNATURE INDICATES COMPLETE UNDERSTANDING OF ADJACENT BARNA LOG HOME DISCLAIMER APPROVED AS DRAWN  
 APPROVED WITH CORRECTIONS - NO RESUBMITTING OF PLANS REQUIRED.  
 REVISE PER CHANGES INDICATED ON PLANS AND RESUBMIT. CHARGES MAY APPLY.

NAME: \_\_\_\_\_ DATE: \_\_\_\_\_  
COPYRIGHT 2006. ALL RIGHTS RESERVED BY: BARNA LOG HOMES, LLC

**BARNA LOG HOME DISCLAIMER**  
COPYRIGHT ON THIS DESIGN AND PLAN OR ANY DESIGNS CREATED, MODIFIED OR DERIVATIVES THEREOF BELONG TO BARNA LOG HOMES. DUE TO VARIANCE IN LOCAL CODES, BARNA LOG HOMES MAKES NO WARRANTY AS TO PLANS CONFORMANCE WITH LOCAL BUILDING CODES. BARNA LOG HOMES IS NOT RESPONSIBLE FOR APPROVAL IN CUSTOMER'S LOCAL BY A LICENSED ENGINEER OR ARCHITECT IF REQUIRED. ANY DISCREPANCIES IN OR QUESTIONS IN REGARD TO INTERPRETATION OF THE PLANS SHALL BE THE RESPONSIBILITY OF THE CUSTOMER. THE PLANS SHALL BE DEPARTMENT BEFORE PROCEEDING WITH THAT PORTION OF WORK. THE PLANS ARE THE COPYRIGHTED PROPERTY OF BARNA LOG HOMES.

A Custom Home For:  
**BEARHAT MOUNTAIN**

Do not scale drawings. Printed dimensions supersede all scale factors.

**SBCI**  
PST&ENI  
REPORT # 2305  
CODE COMPLIANCE FOR  
2003 INTERNATIONAL CODE  
FOR ONE- AND TWO-FAMILY  
DWELLINGS

**PLAN/FRAMING**

PA Number: \_\_\_\_\_  
Dealer: **BARNA**  
Coordinator: **BARNA**  
Date: **6/15/06**  
Drawn by: **BTH** Checked by: \_\_\_\_\_  
File Name: **BEAR**  
Sheet Number: **3**  
Sheet 3 Of 5

REVISED BTH 5/18/07