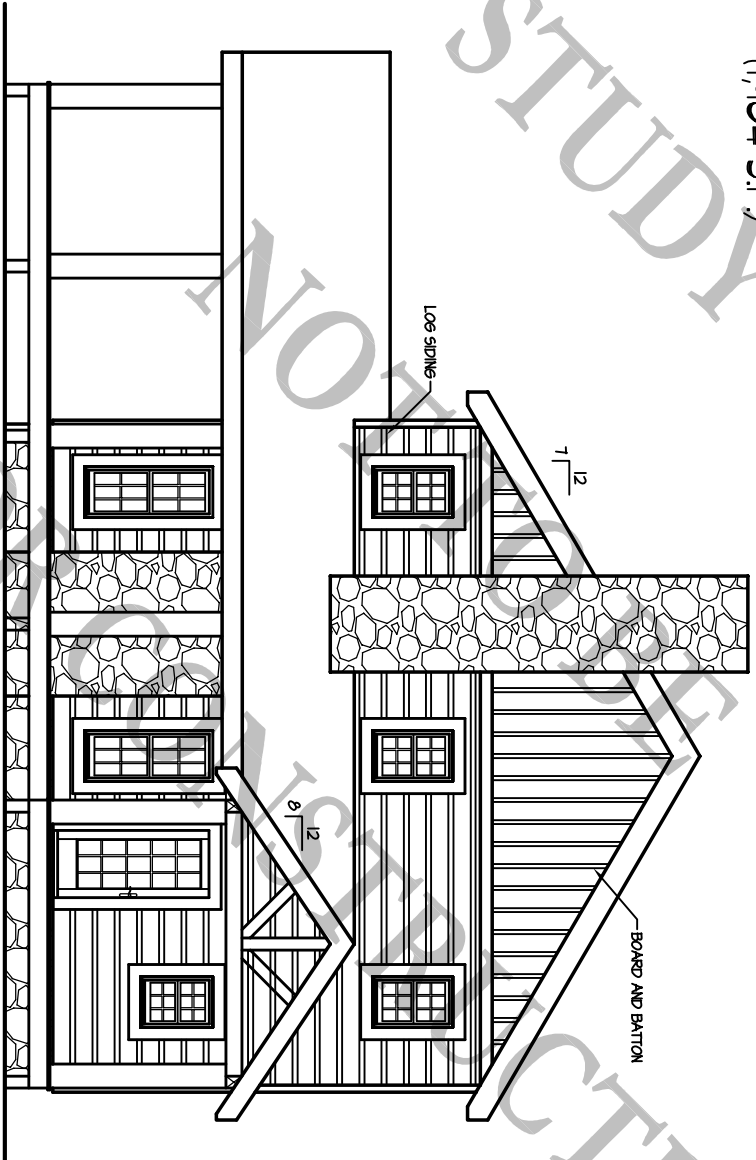


Bryson Cabin
(1,904 S.F.)

8/11/08



FRONT ELEVATION

1/8" = 1'-0"

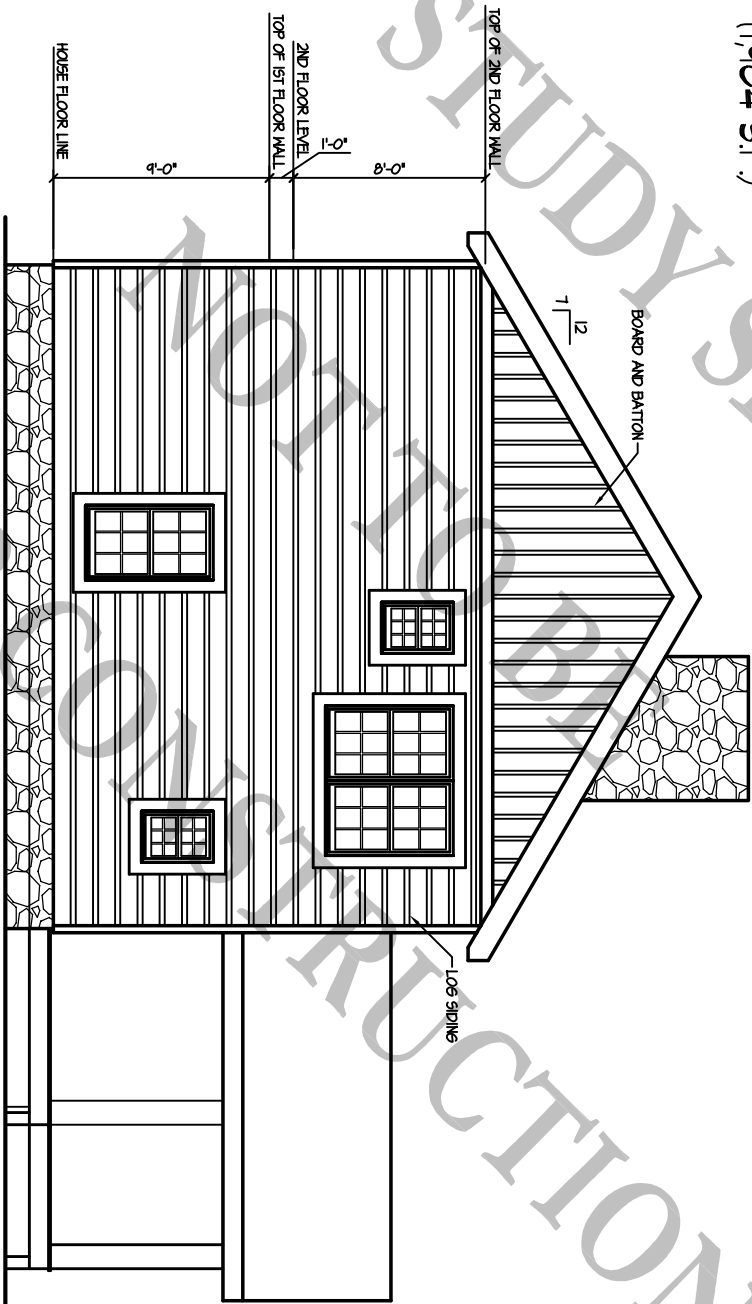
BARNA
Log Homes
of Georgia

USED FOR ARCHITECTURAL STUDY SET

SECTION

Bryson Cabin
(1,904 S.F.)

8/11/08



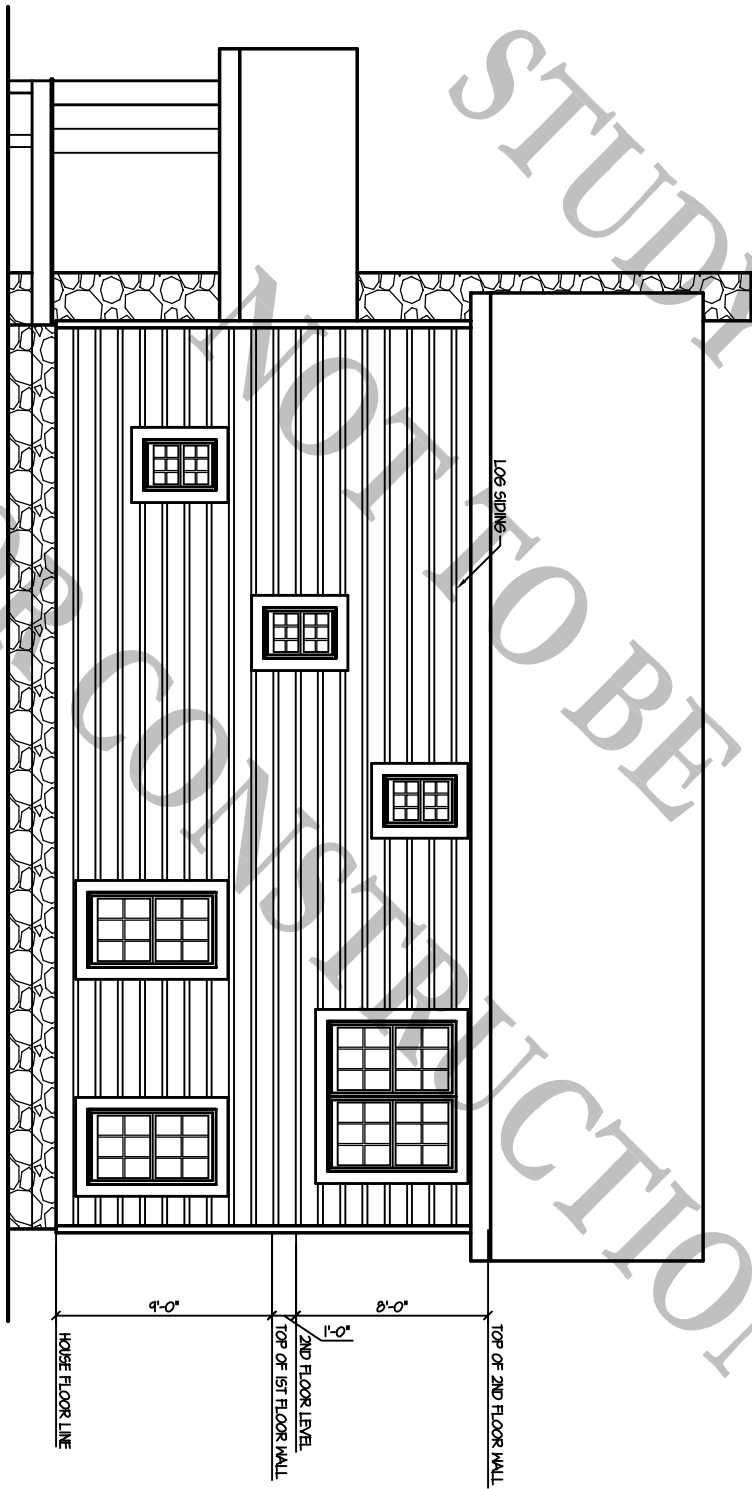
REAR ELEVATION

1/8" = 1'-0"

BARNA
Log Homes
of Georgia

Bryson Cabin
(1,904 S.F.)

3/11/03



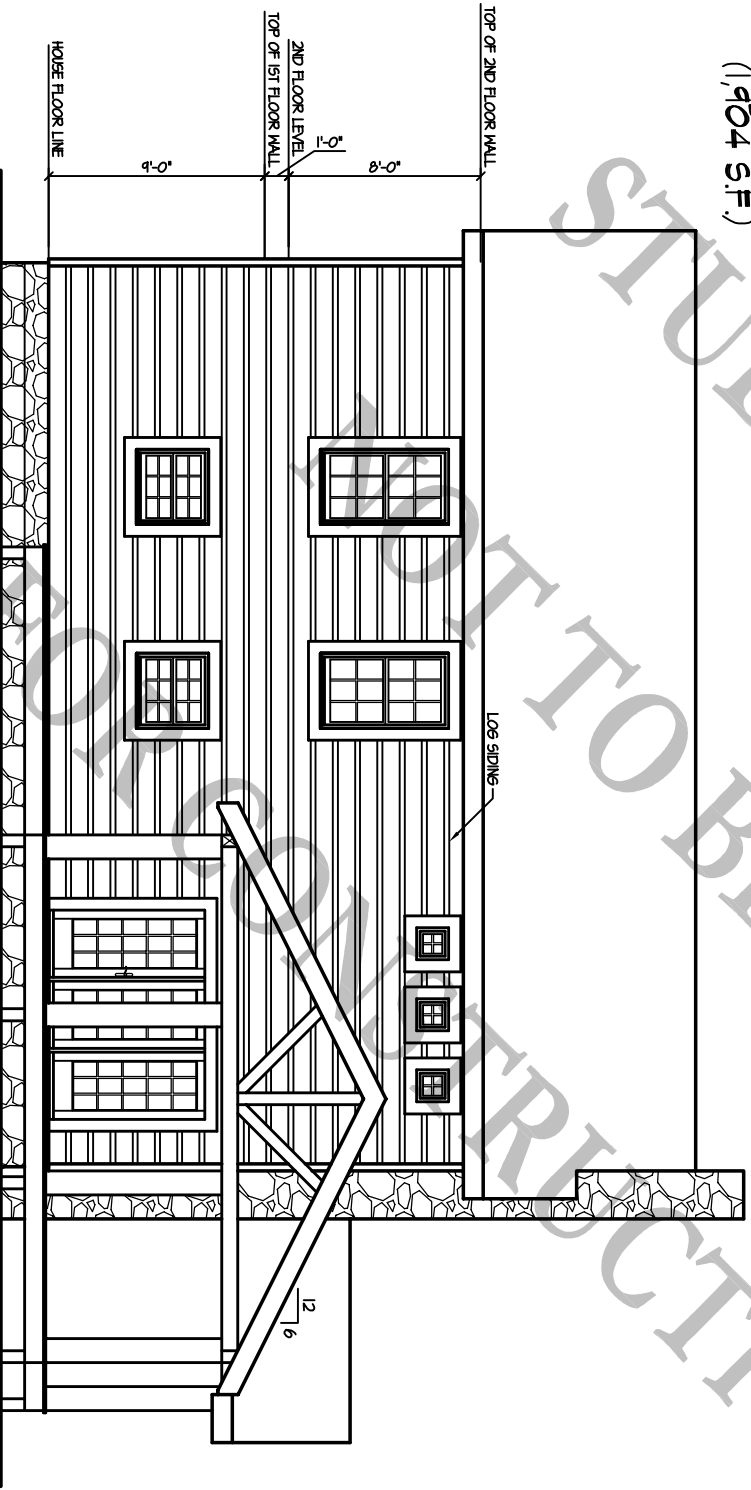
RIGHT ELEVATION

1/8" = 1'-0"

BARNA
Log Homes
of Georgia

Bryson Cabin
(1,904 S.F.)

8/11/03



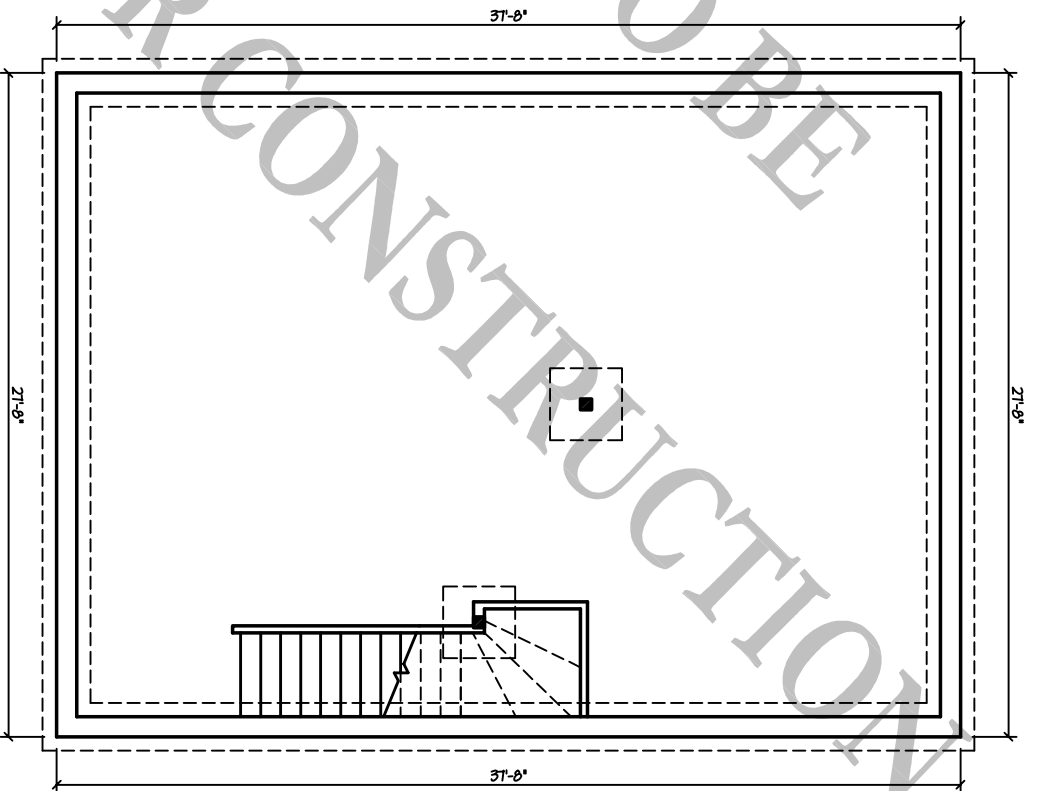
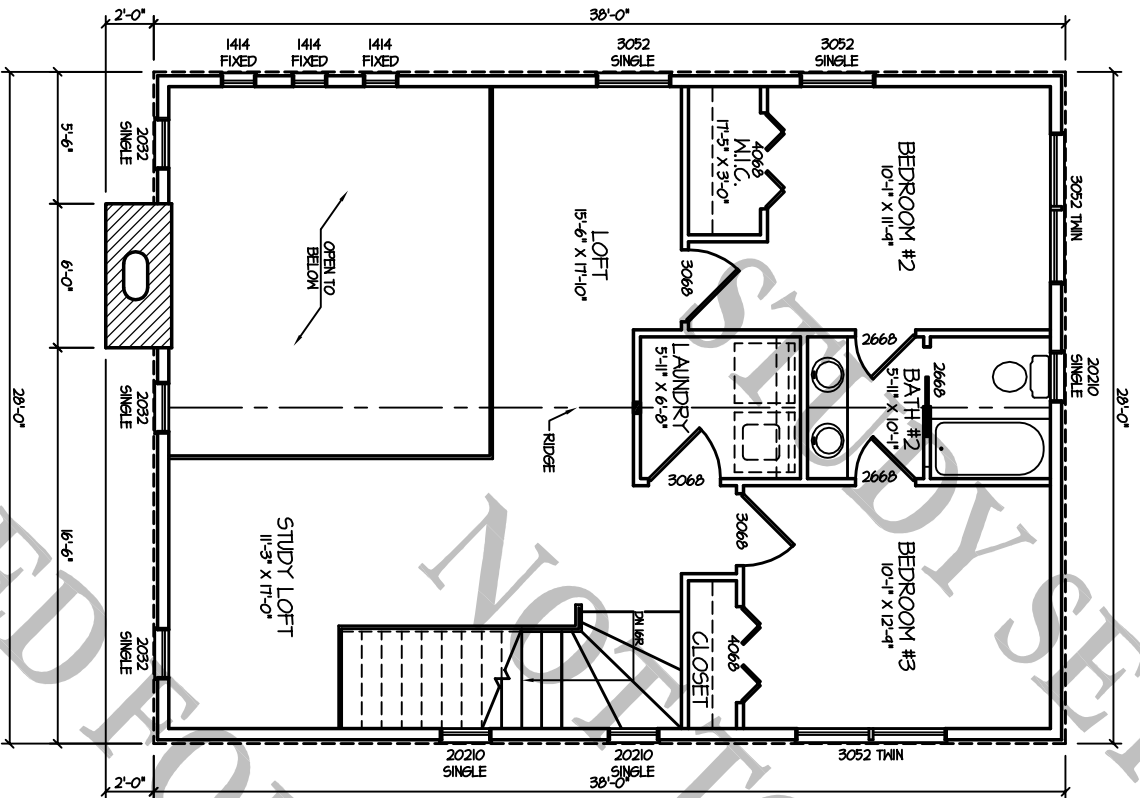
LEFT ELEVATION

1/8" = 1'-0"

BARNA
Log Homes
of Georgia

Bryson Cabin

8/11/08



BARINA
Log Homes
of Georgia