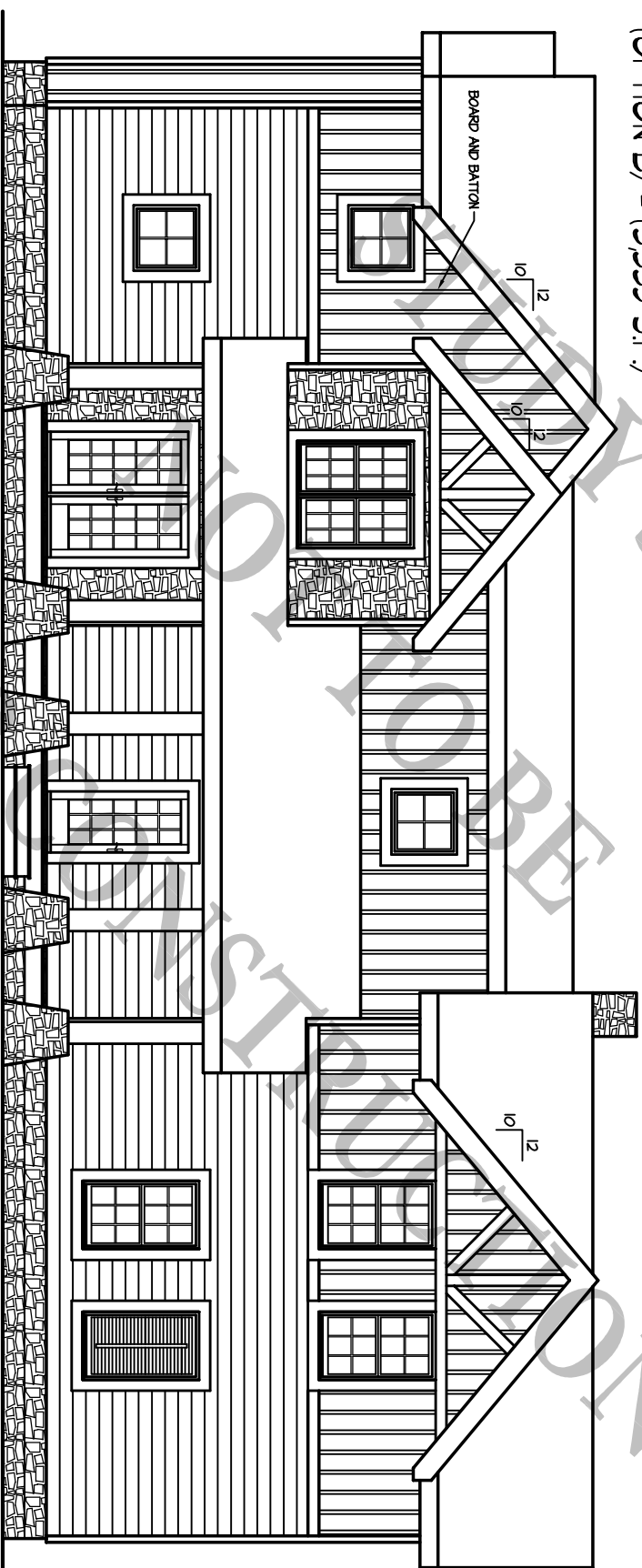


Appalachian Barn
(OPTION B) - (3,335 S.F.)

8/11/08



FRONT ELEVATION

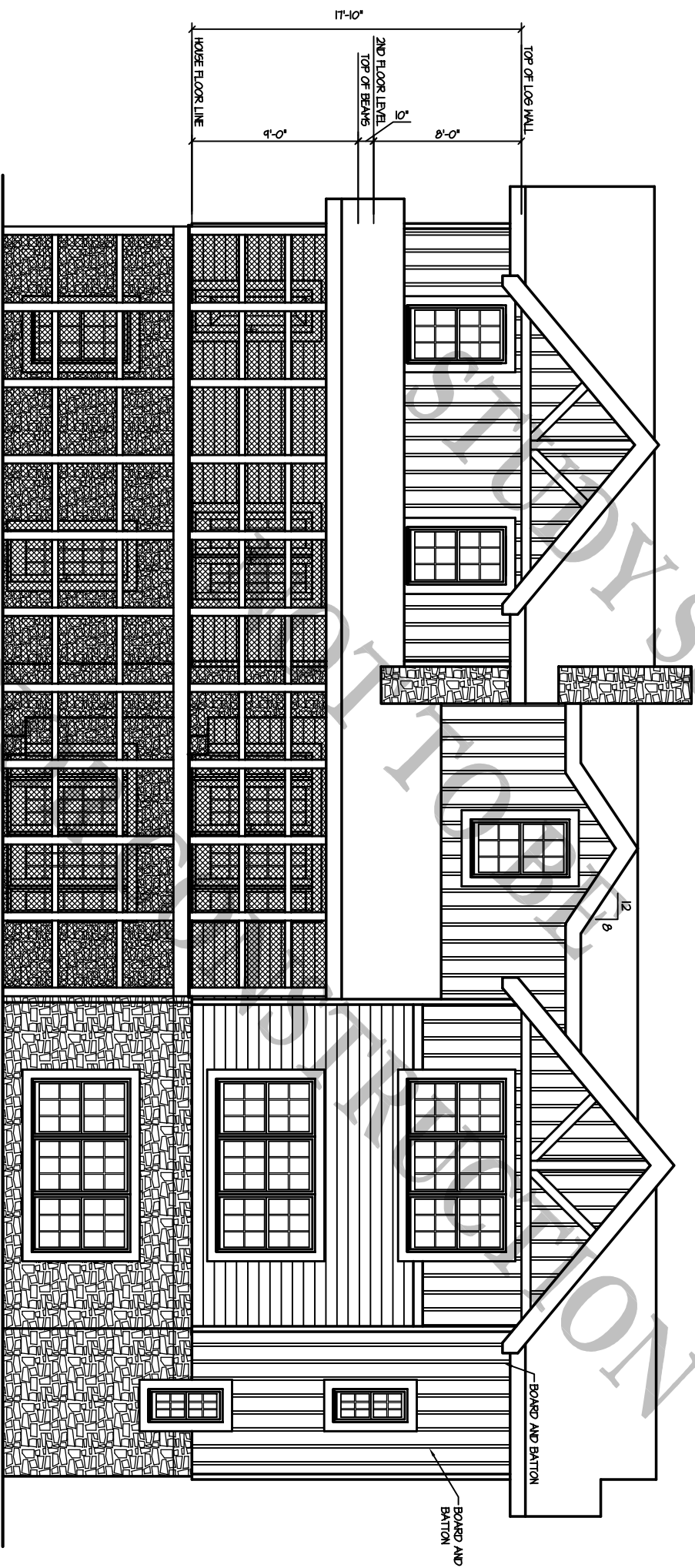
1/8" = 1'-0"

BARNA
Log Homes
of Georgia

USED FOR PREVIEW SET

Appalachian Barn
(OPTION B) - (3,335 S.F.)

8/1/06



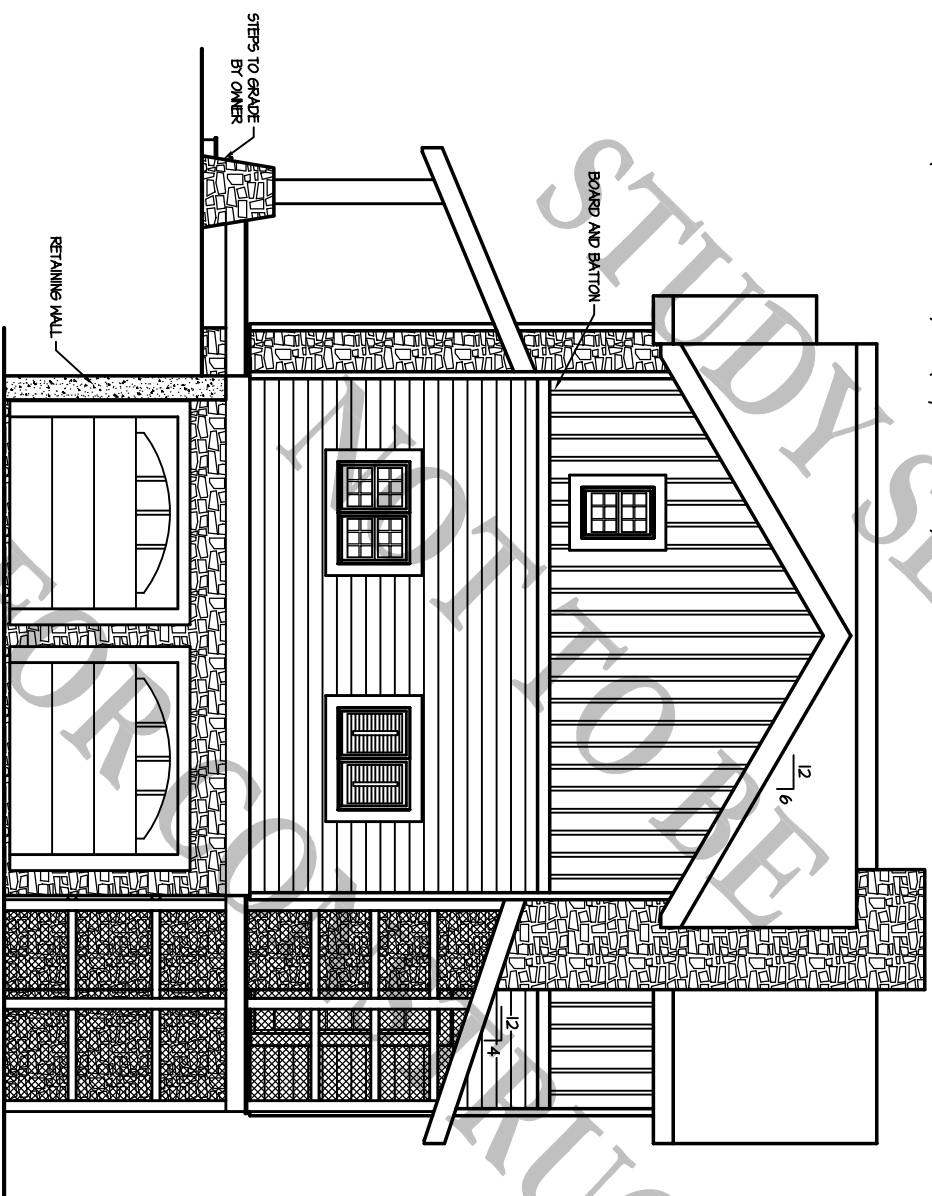
REAR ELEVATION

1/8" = 1'-0"

BARNA
Log Homes
of Georgia

Appalachian Barn
(OPTION B) - (3,335 S.F.)

5/1/08



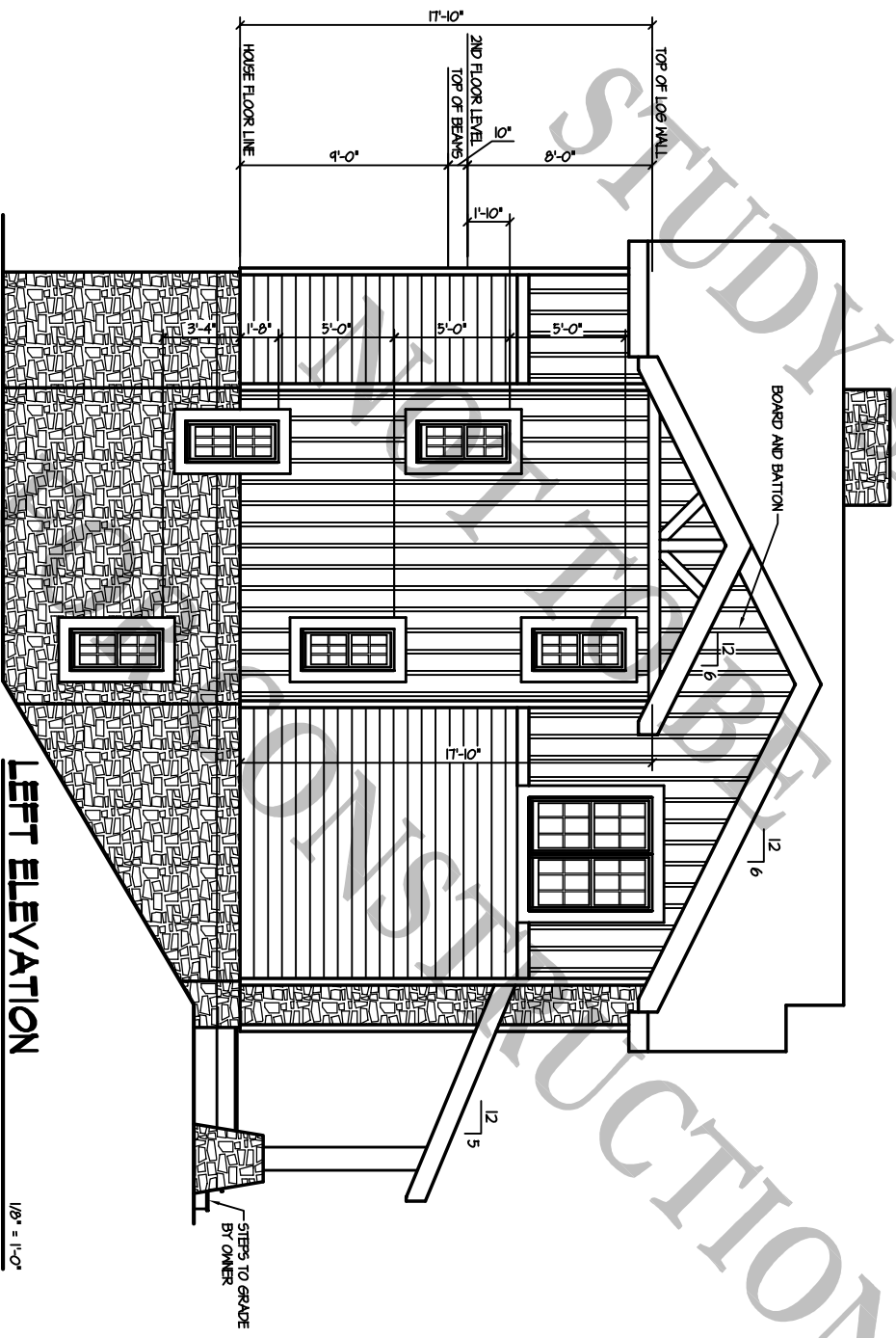
RIGHT ELEVATION

1/8" = 1'-0"

BARNA
Log Homes
of Georgia

Appalachian Barn
(OPTION B) - (3,335 S.F.)

5/11/08



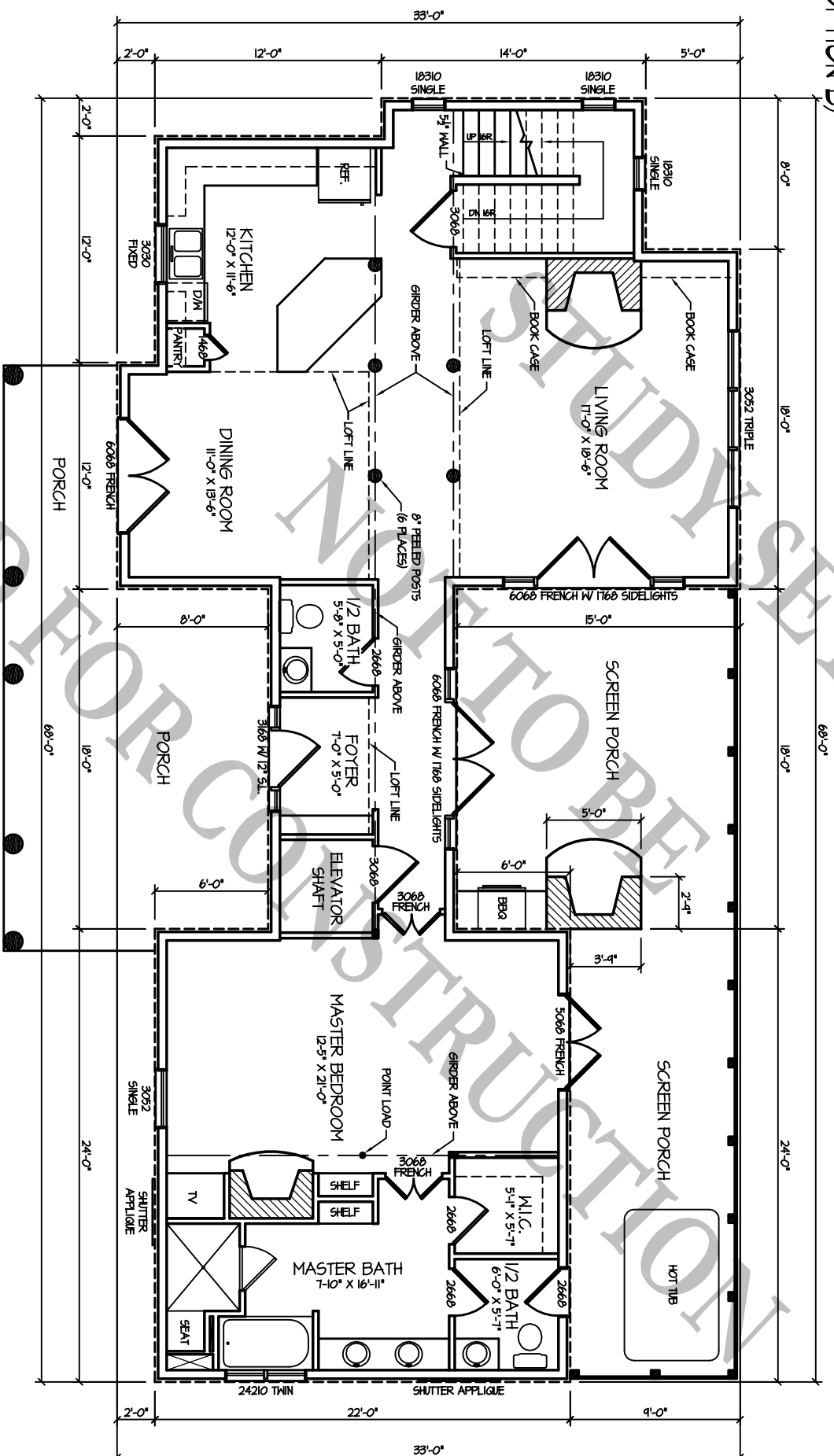
LEFT ELEVATION

1/8" = 1'-0"

BARNA
Log Homes
of Georgia

Appalachian Barn
(OPTION B)

B7108



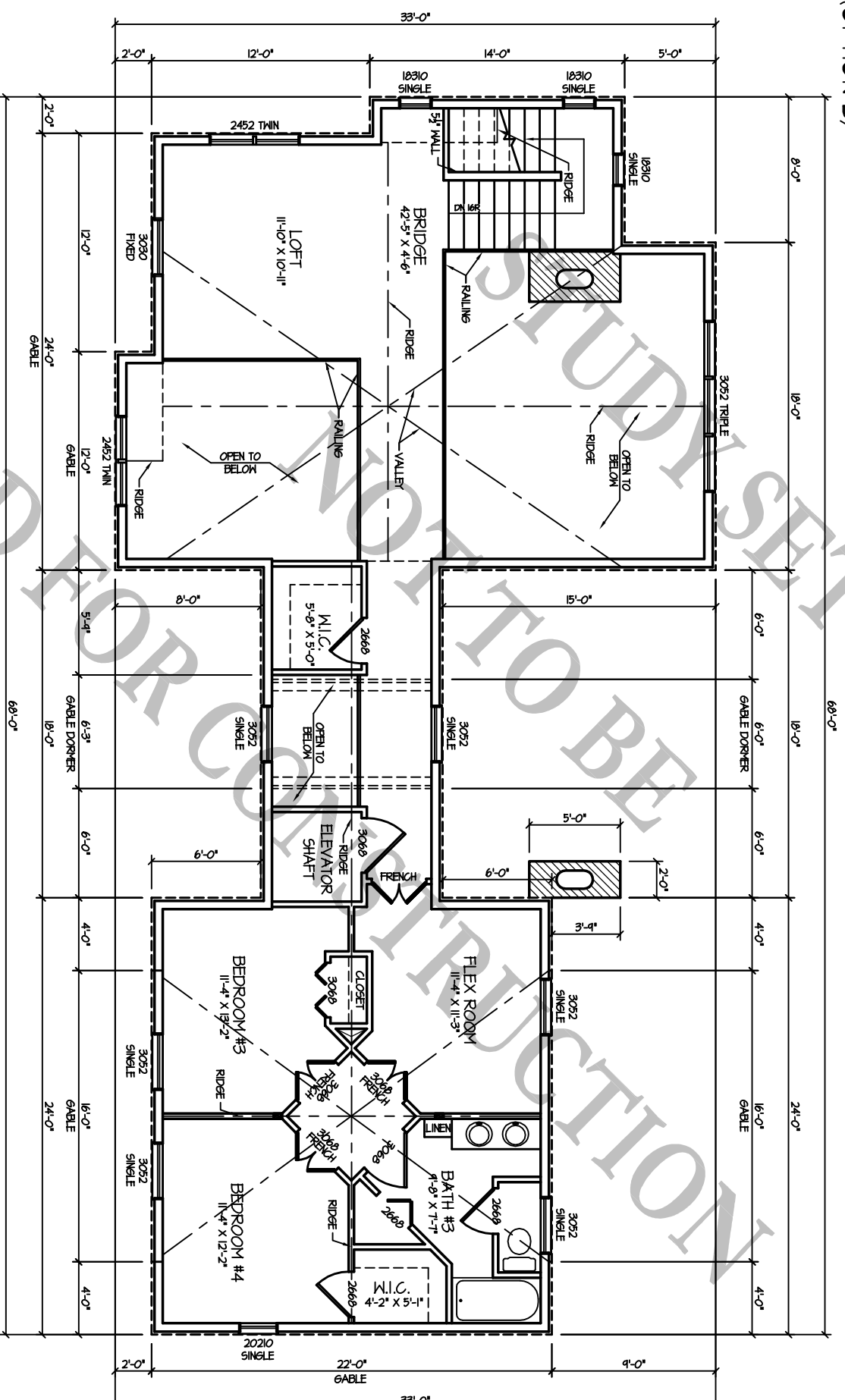
1st FLOOR PLAN
(1,474 S.F.)

1/8" = 1'-0"

BARNA
Log Homes
of Georgia

Appalachian Barn
(OPTION B)

8/7/08

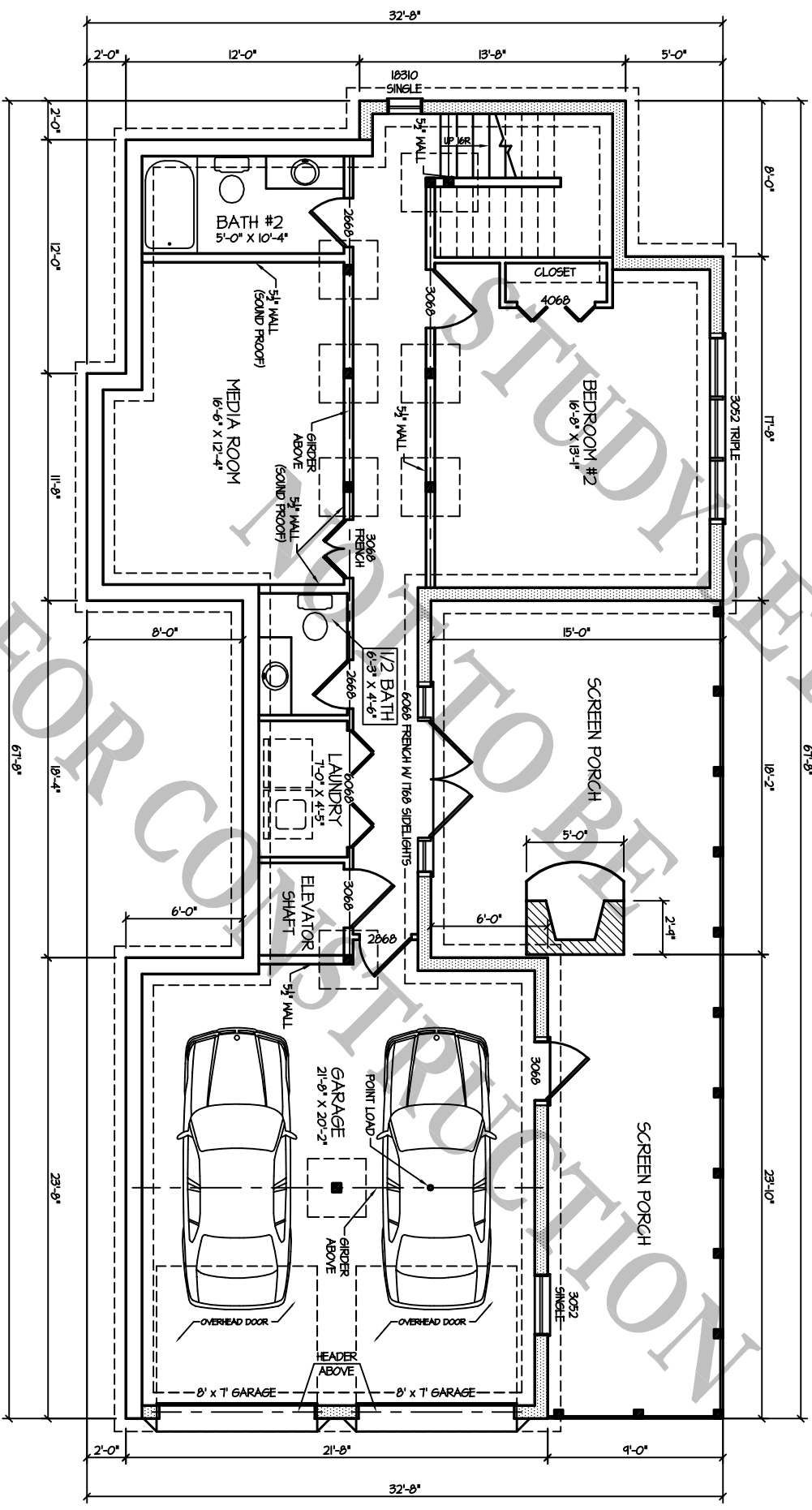


2nd FLOOR PLAN
(934 S.F.)

1/8" = 1'-0"

BARNA
Log Homes
of Georgia

Appalachian Barn
(OPTION B) 8/1/08



FOUNDATION
(TERRACE LEVEL) - (922 FINISHED S.F.)
(514 UNFINISHED S.F.)

BARNA
Log Homes
of Georgia

USE FOR ARCHITECT ONLY