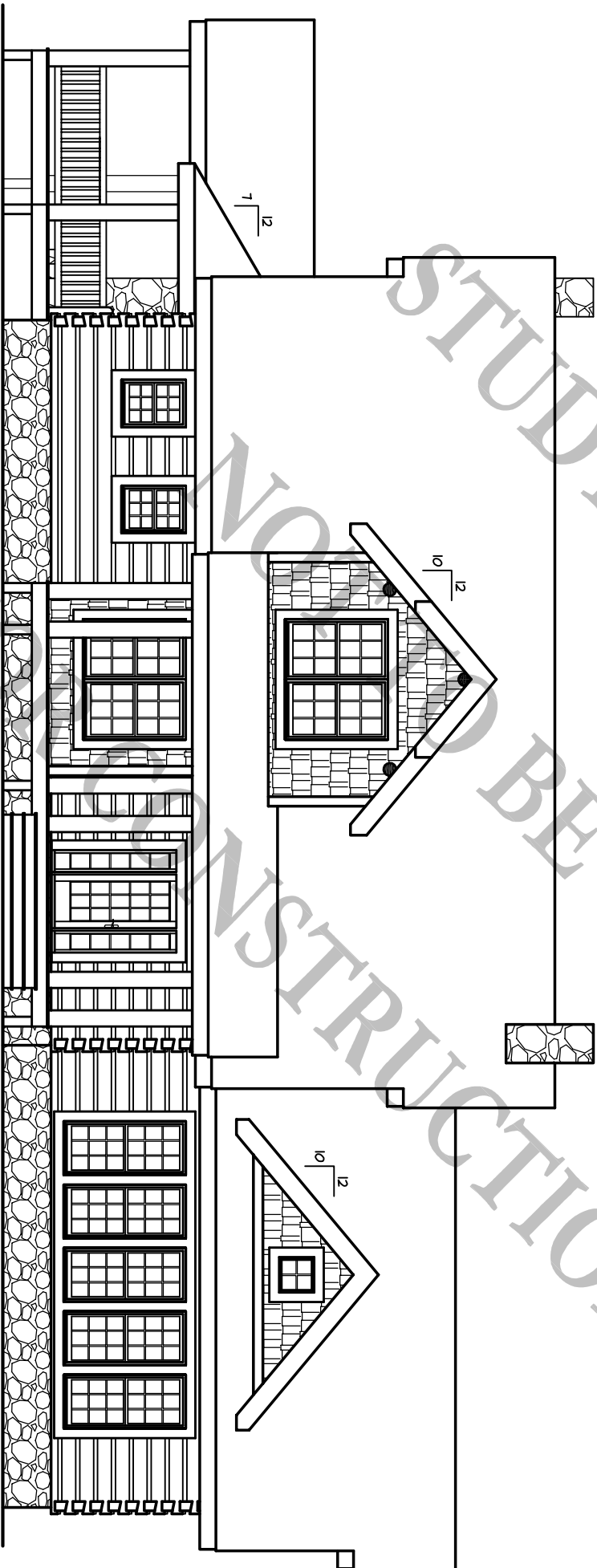


Fontana Lodge  
(3,623 S.F.)

12/09/08



FRONT ELEVATION

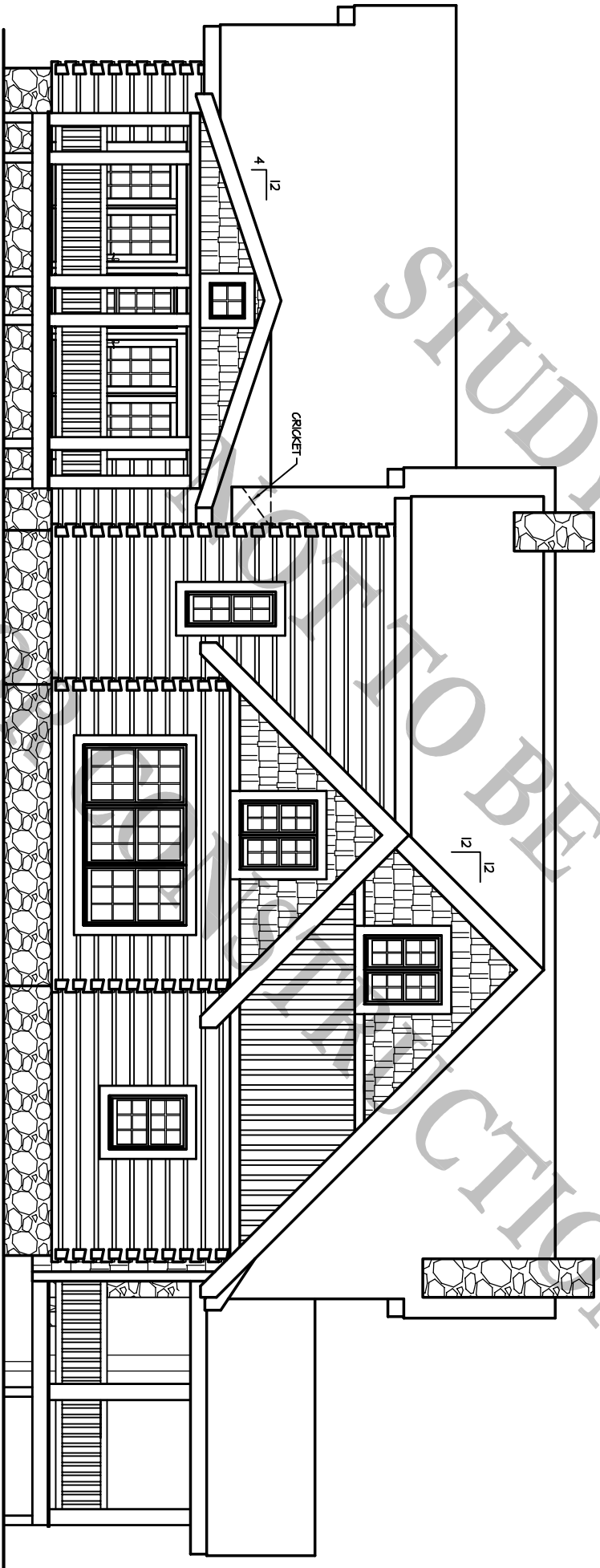
1/8" = 1'-0"

**BARNA**  
Log Homes  
of Georgia

USED FOR NO INSTRUCTION BE

Fontana Lodge  
(3,623 S.F.)

12/09/08



REAR ELEVATION

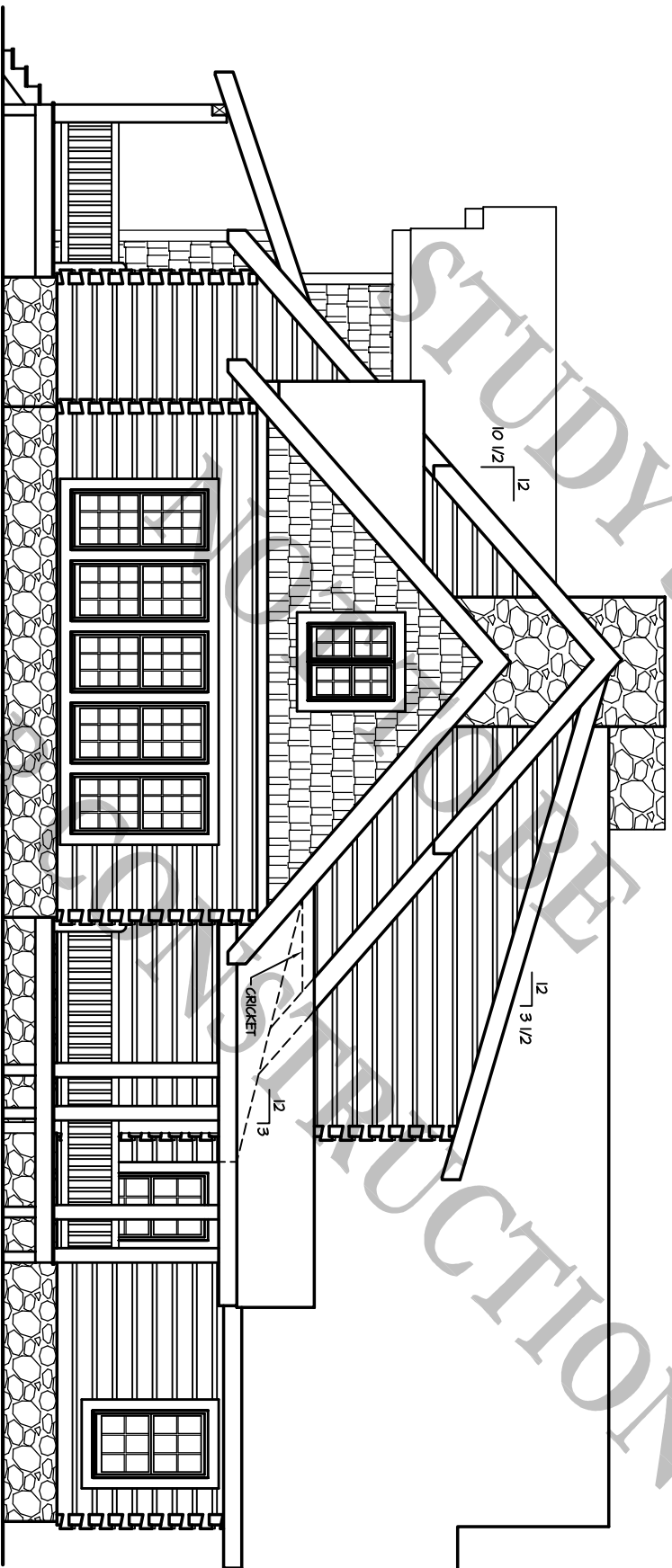
1/8" = 1'-0"

**BARINA**  
Log Homes  
of Georgia

USED FOR ARCHITECTURAL STUDY SET  
SECTION

**Fontana Lodge**  
(3623 S.F.)

12/09/08



**RIGHT ELEVATION**

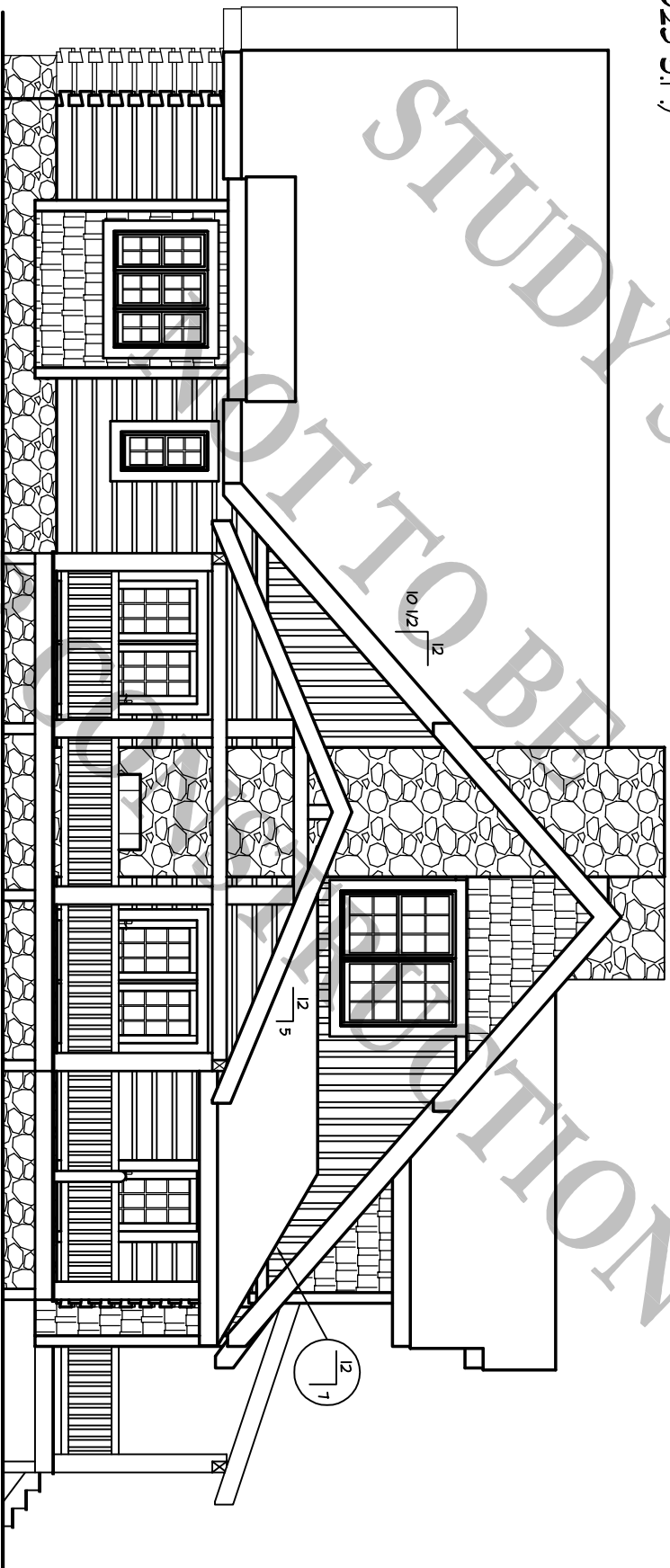
1/8" = 1'-0"

**BARNA**  
Log Homes  
of Georgia

USED FOR STUDY SET PRODUCTION

**Fontana Lodge**  
(3,623 S.F.)

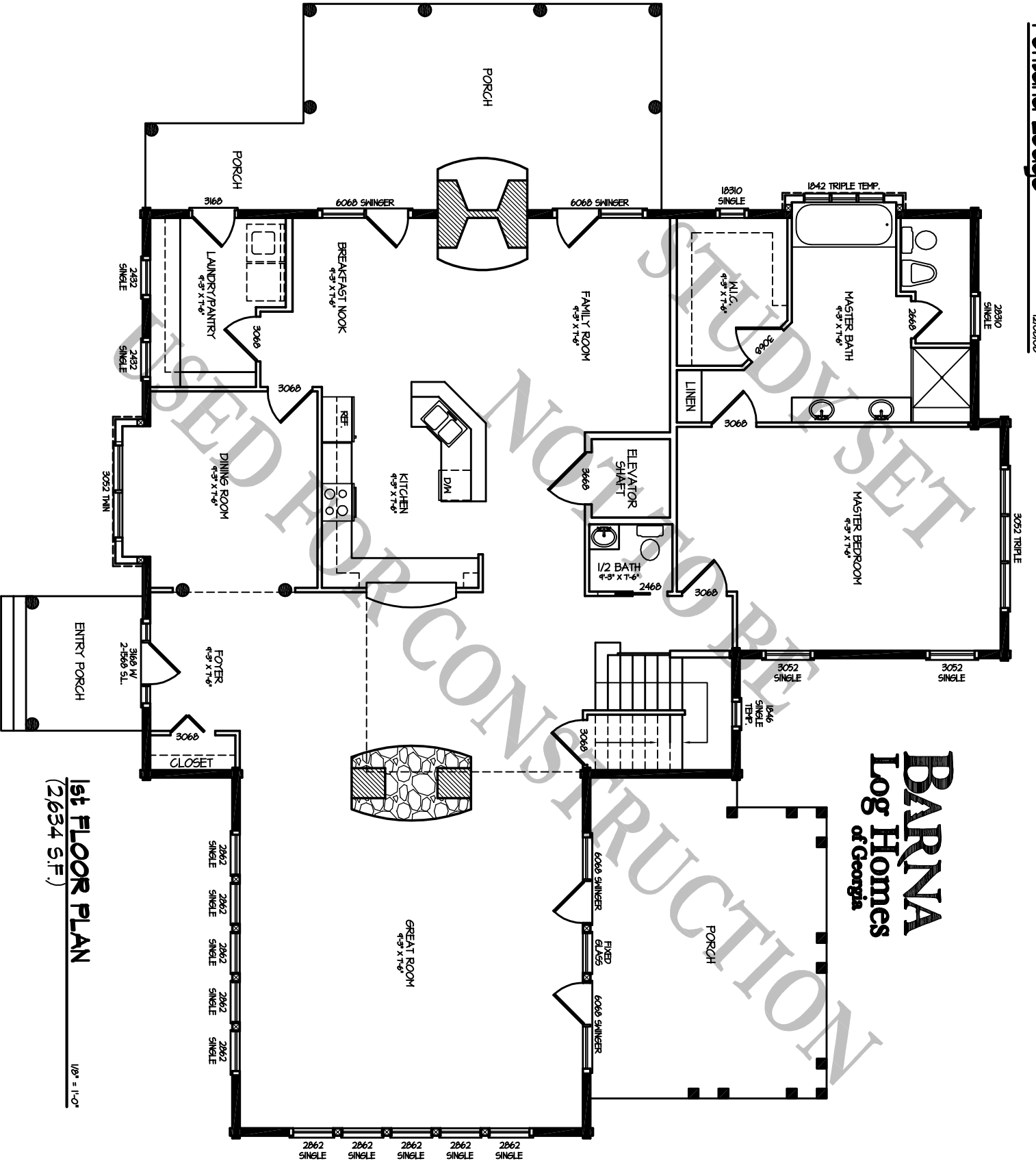
12/09/08



**LEFT ELEVATION**

1/8" = 1'-0"

**BARNA**  
Log Homes  
of Georgia



**BARNA**  
Log Homes  
of Georgia

**1st FLOOR PLAN**  
(2634 S.F.)

1/8" = 1'-0"

