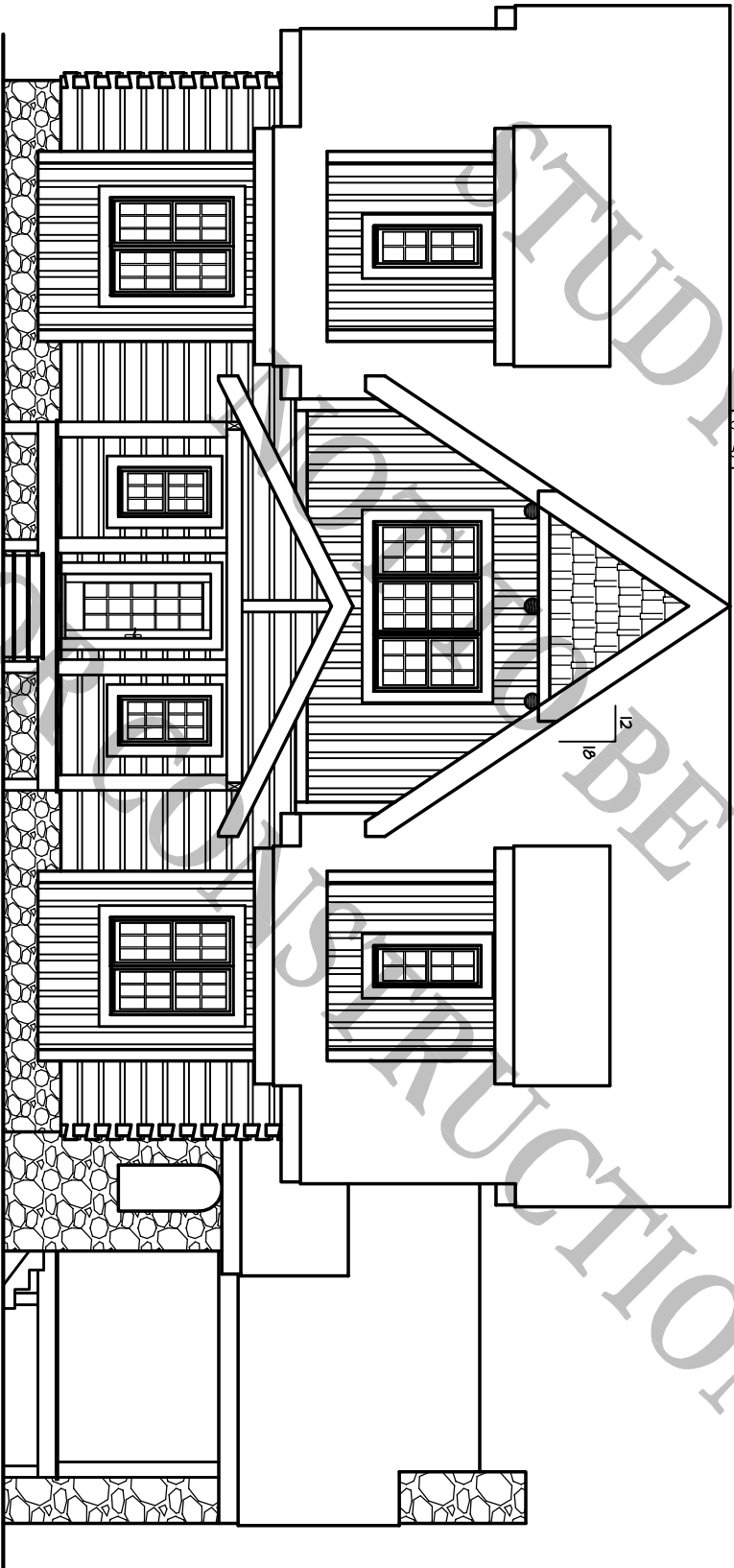


Smallmouth Lodge
(2,533 S.F.)

12/04/08



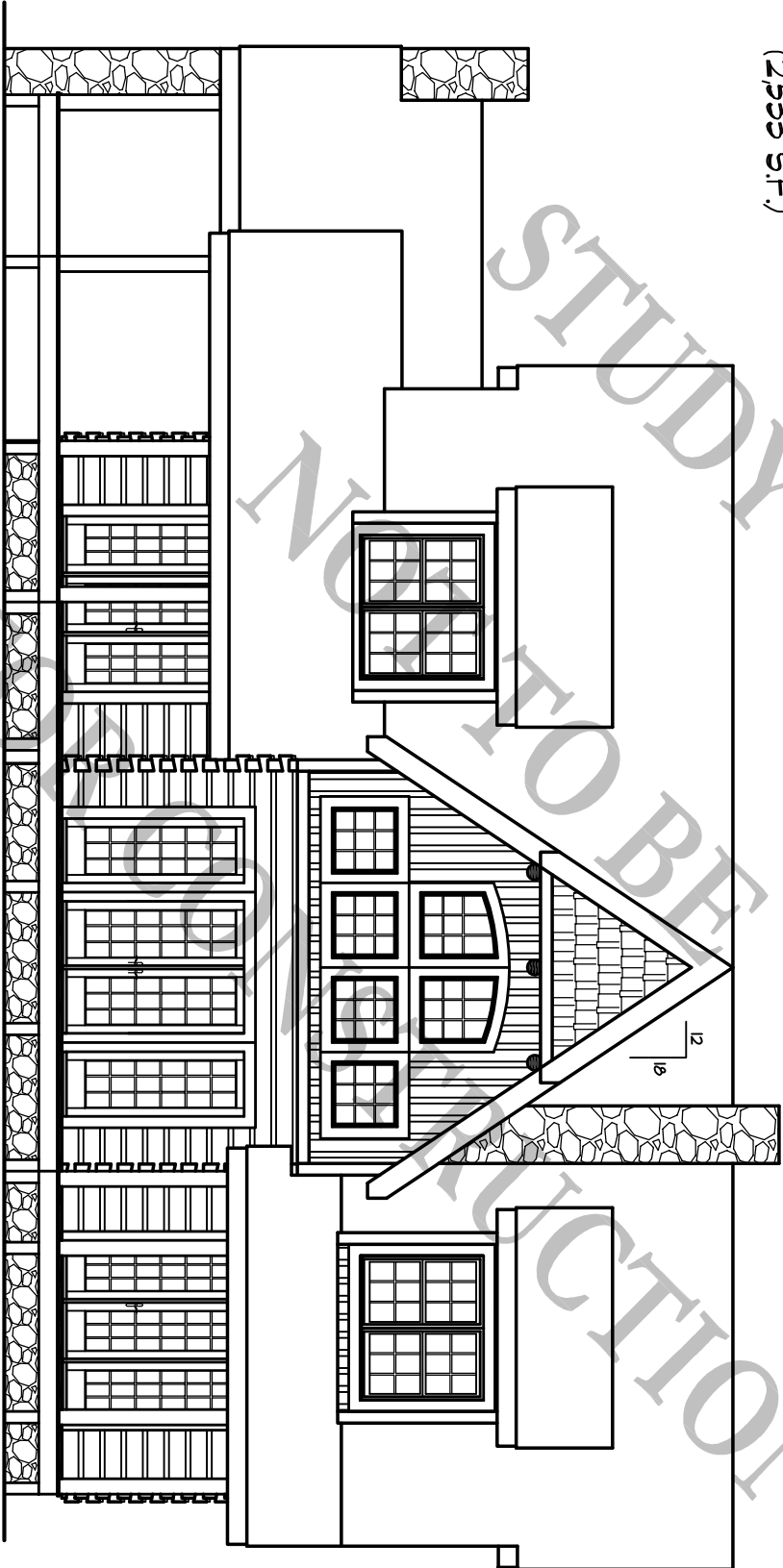
FRONT ELEVATION

1/8" = 1'-0"

BARNA
Log Homes
of Georgia

Smallmouth Lodge
(2,533 S.F.)

12/04/08



REAR ELEVATION

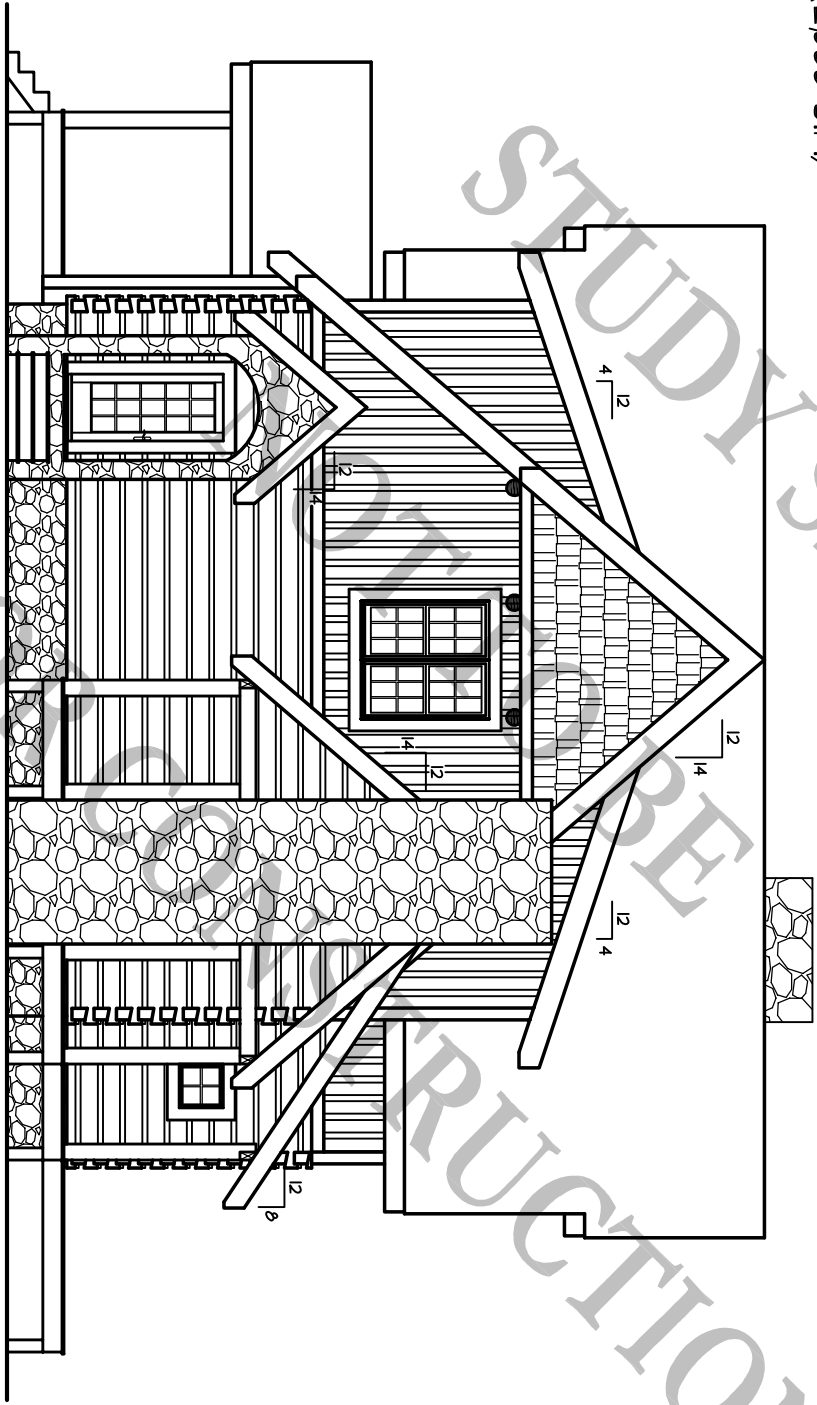
1/8" = 1'-0"

BARNA
Log Homes
of Georgia

USED FOR ARCHITECTURAL STUDY SET

Smallmouth Lodge
(2,533 S.F.)

12/04/08



RIGHT ELEVATION

1/8" = 1'-0"

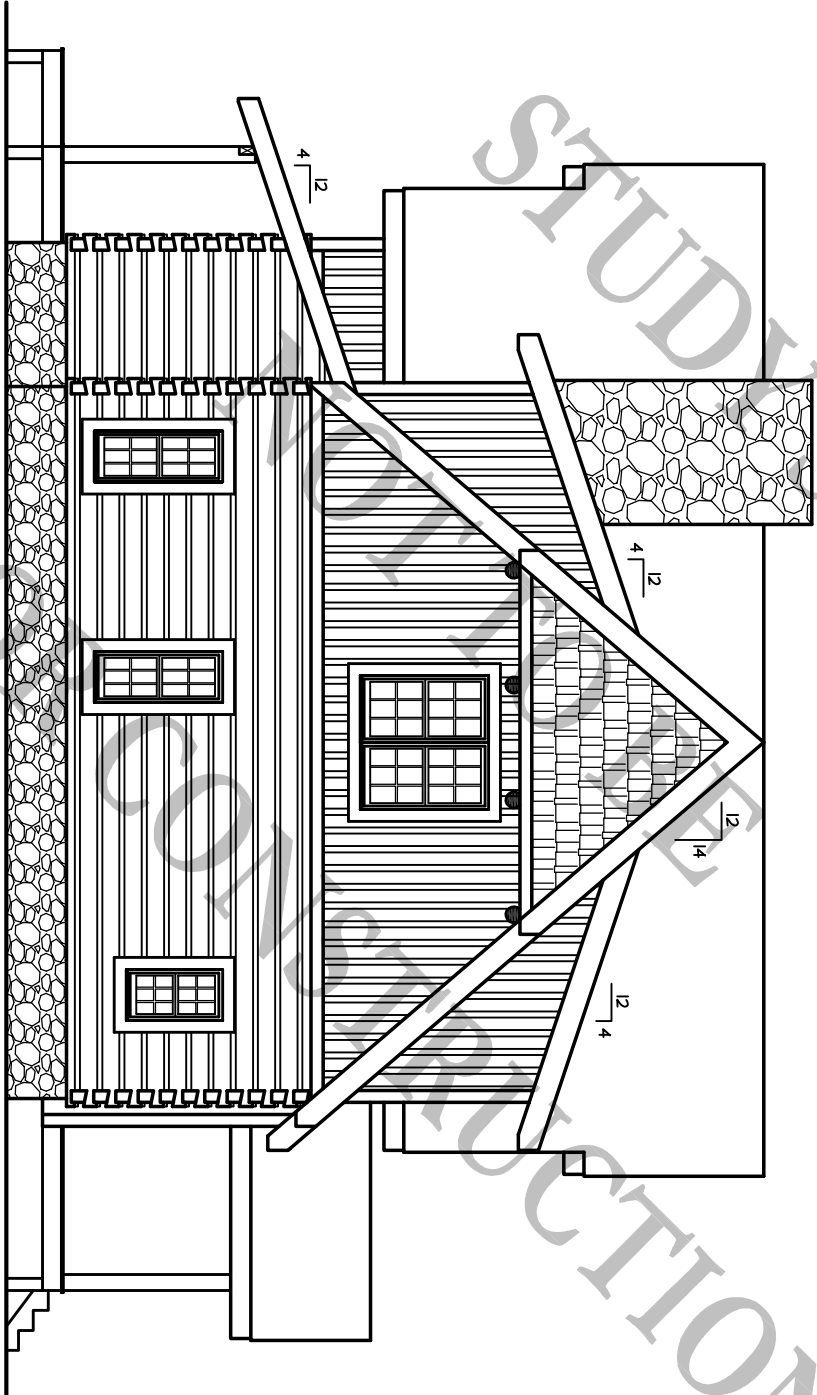
BARNA
Log Homes
of Georgia

USED FOR STUDY SET

CONSTRUCTION

Smallmouth Lodge
(2,533 S.F.)

12/04/08



LEFT ELEVATION

1/8" = 1'-0"

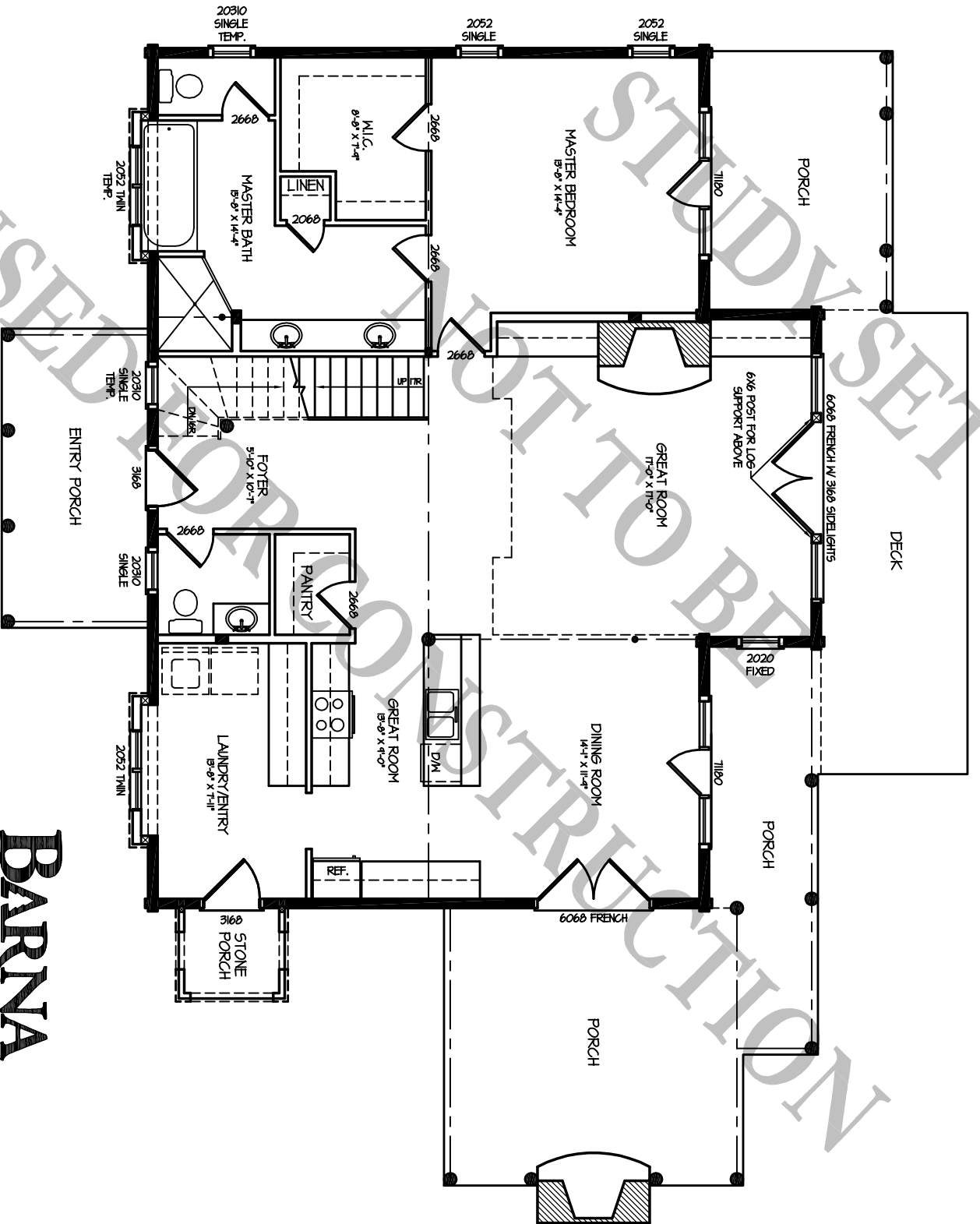
BARNA
Log Homes
of Georgia

USED FOR STUDY SET

NOT FOR CONSTRUCTION

Smallmouth Lodge

12/04/08



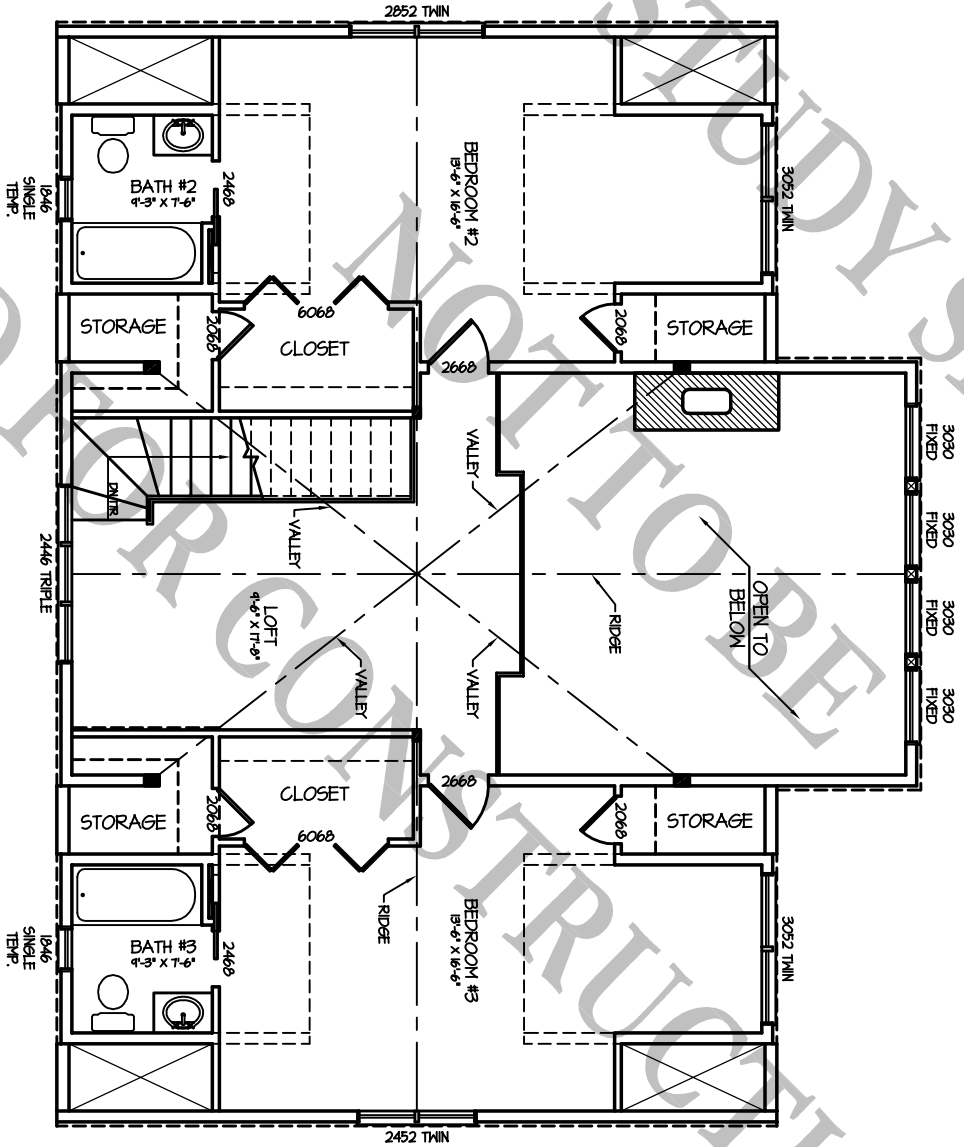
1st FLOOR PLAN
(1,502 S.F.)

1/8" = 1'-0"

BARNA
Log Homes
of Georgia

Smallmouth Lodge

12/04/08



2nd FLOOR PLAN
(1,031 S.F.)

1/8" = 1'-0"

BARNA
Log Homes
of Georgia