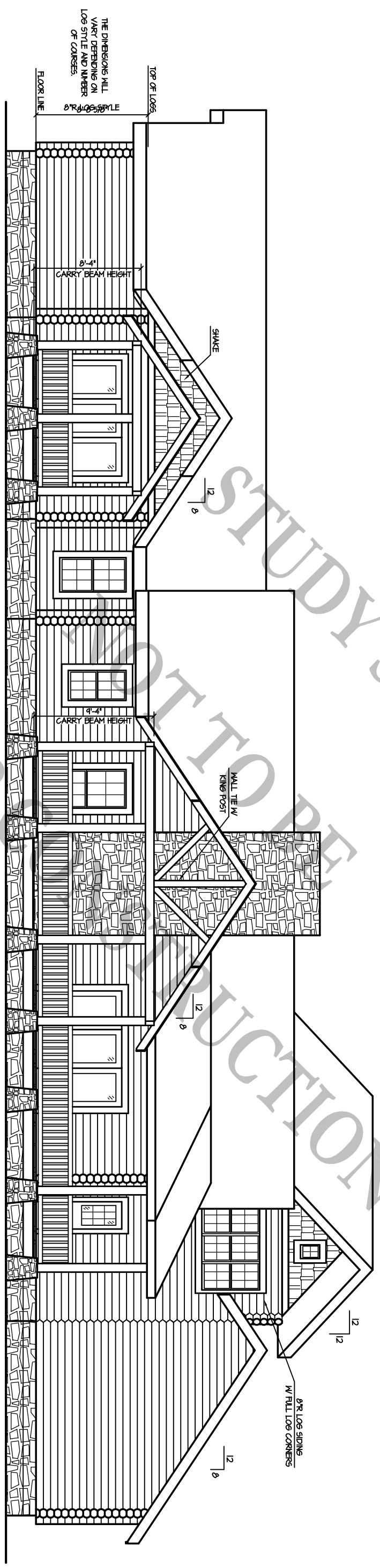


Cumberland Breaks
(2,859 S.F.)

01/14/04



REAR ELEVATION

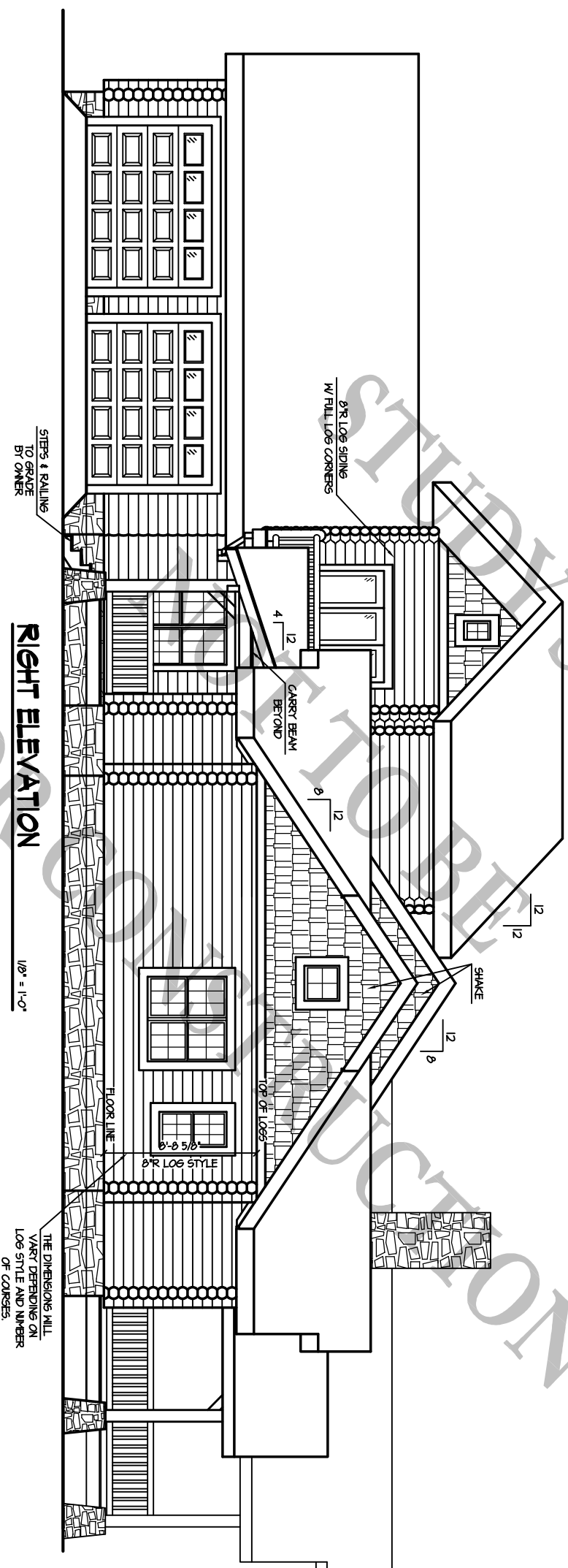
1/8" = 1'-0"

BARNA
Log Homes
of Georgia

USED FOR PHOTO STUDY SET
CONSTRUCTION

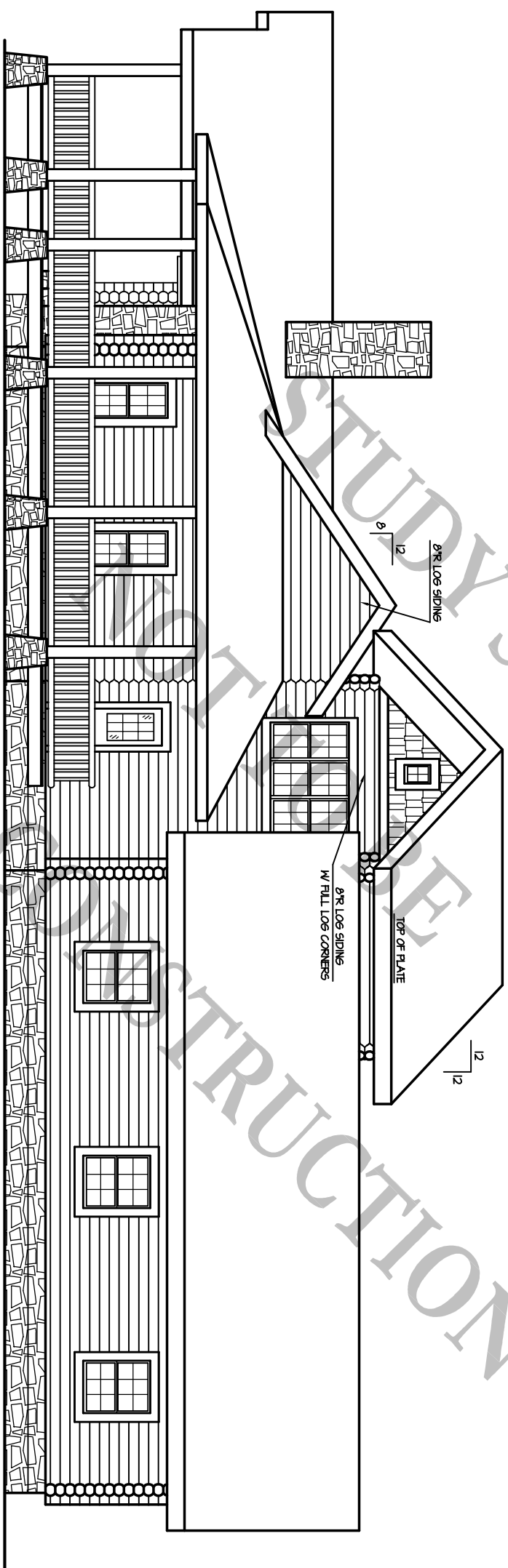
Cumberland Breaks
(2,859 S.F.)

01/14/04



USED FOR NON-COMMERCIAL SET

BARNA
Log Homes
of Georgia



LEFT ELEVATION

1/8" = 1'-0"

